

## Describe your Ideal New West Side Park

A **nature focused park with trails, picnic shelters, a playground, and restrooms** are the community's ideal New West Side Park.

## Tell us what park features to include



A playground, nature trails, and paved trails are the preferred park features.

## Tell us what your preferred programming includes



Social activities, nature based programming, and adult sports are the preferred programming.

## Public Survey Results

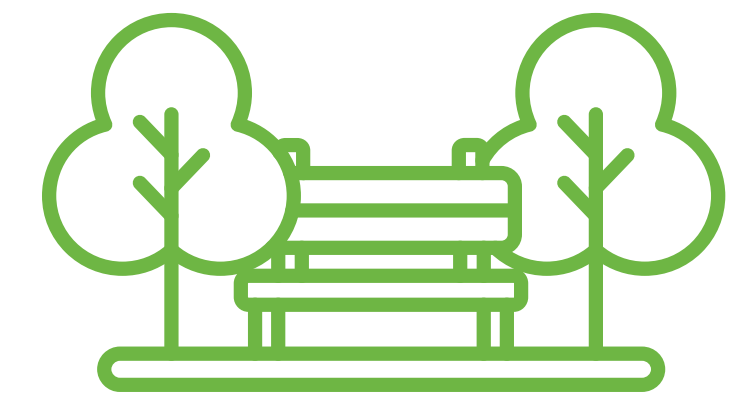
233 Responses



64% of respondents are between the ages of 25 and 44 years old



70% of respondents have at least 1 child



60% of respondents visit parks at least weekly



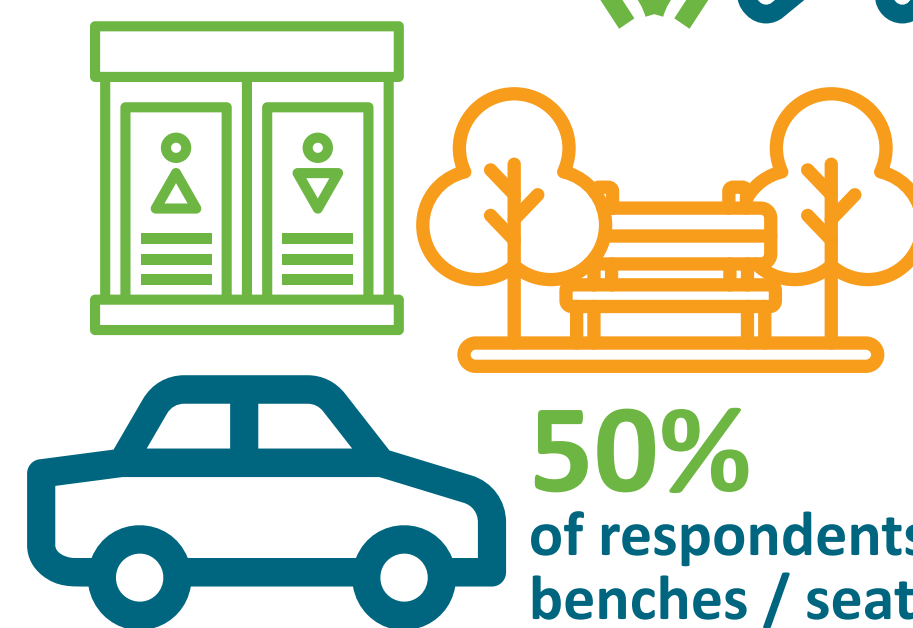
90% of respondents primary reason for visiting parks is for recreation



families and youth should receive the highest priority for recreation opportunities in the new park



50% of respondents would like to see paved trails or walkways, a playground, and creek access in the new park



50% of respondents identified parking, benches / seating, and restrooms as amenities they would like included in the new park



80% of respondents would like to include trees for shade in the new park



75% believe family activities should be prioritized when programming and events are held in the new park