

THE BLANTON HOUSE FRONT ENTRY IMPROVEMENTS

625 North Washington Street, Danville, IN 46122

Issued for 100% Construction Drawings
October 2, 2025

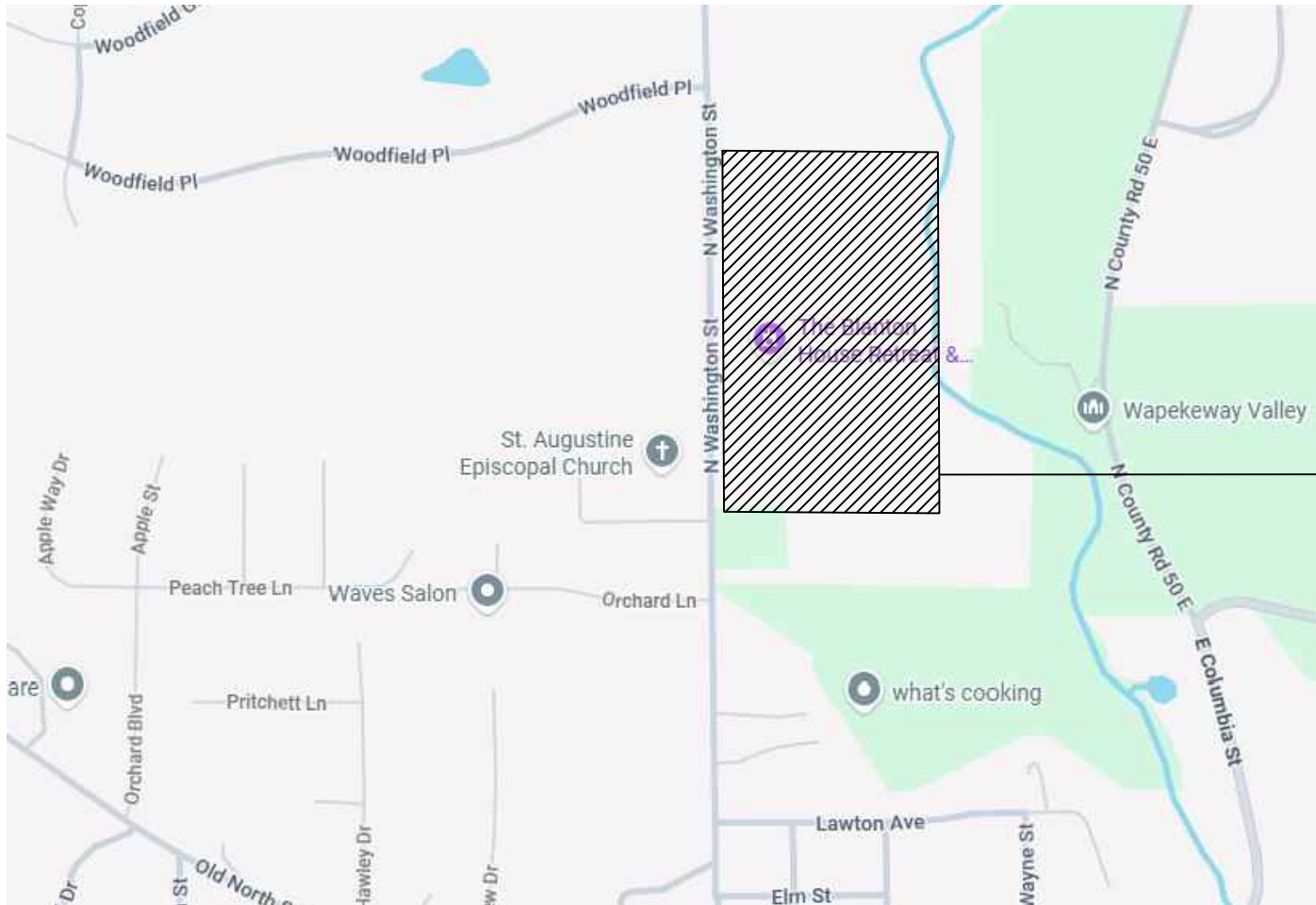
Prepared for:



Prepared by:



Project Location Map



Project Location

Sheet Index

L0.0	Cover Sheet
L1.0	Site Survey
L2.0	Demolition Plan
L3.0	Key Plan
L4.0	Grading and Drainage Plan Enlargement
L4.1	Grading and Drainage Plan Enlargement
L5.0	Landscape Plan Enlargement
L5.1	Landscape Plan Enlargement
L5.2	Planting Schedule & Details
L6.0	Site Details



PREPARED FOR
Town of Danville
Parks and Recreation

PROJECT
The Blanton House
Front Entry Improvements
625 North Washington Street, Danville, IN 46122

ISSUED
October 2, 2025
REVISIONS

No	Date	Issue

CHECKED BY
JS

DRAWN BY
JS

SHEET TITLE
Cover Sheet

SCALE IN FEET



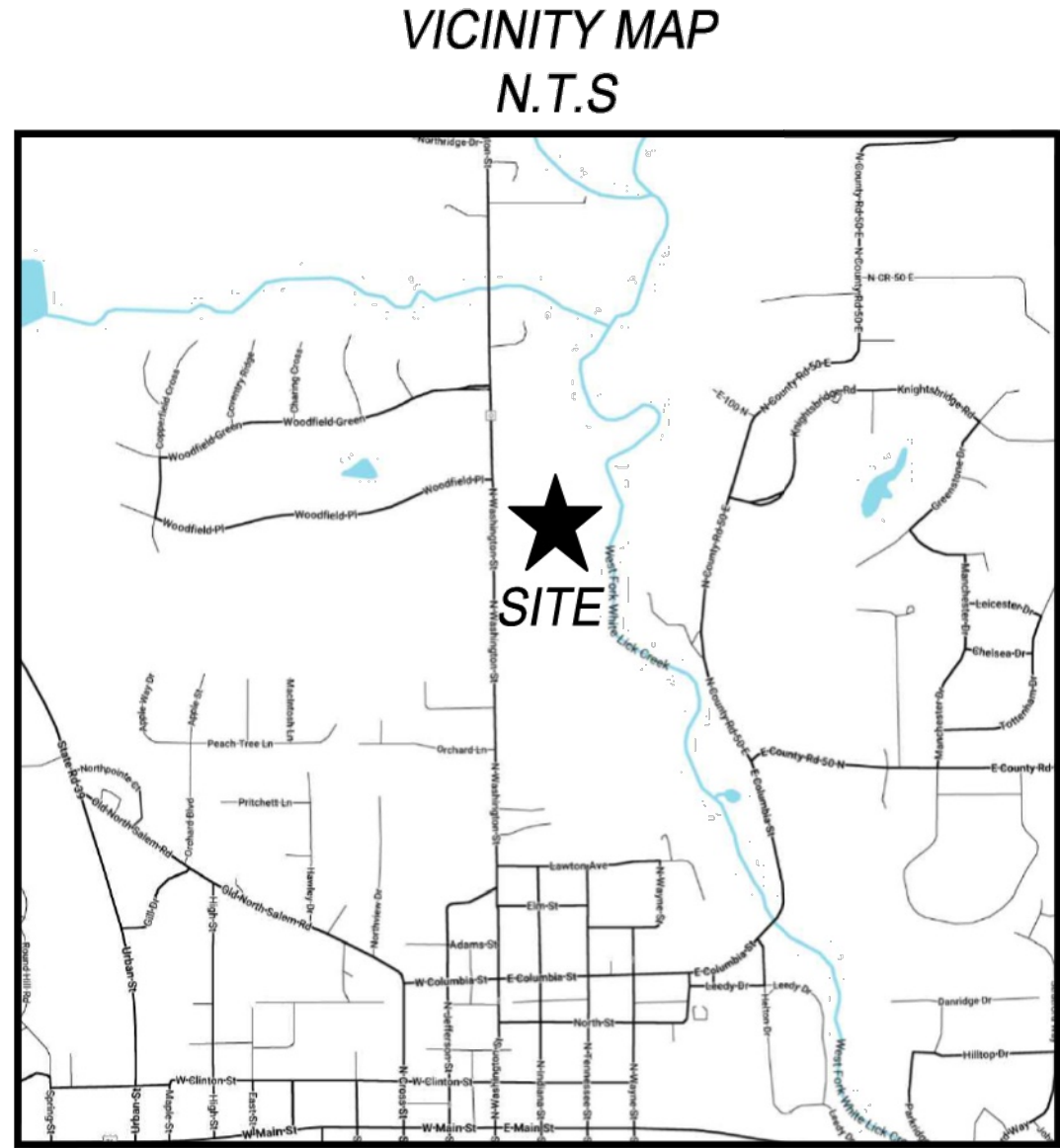
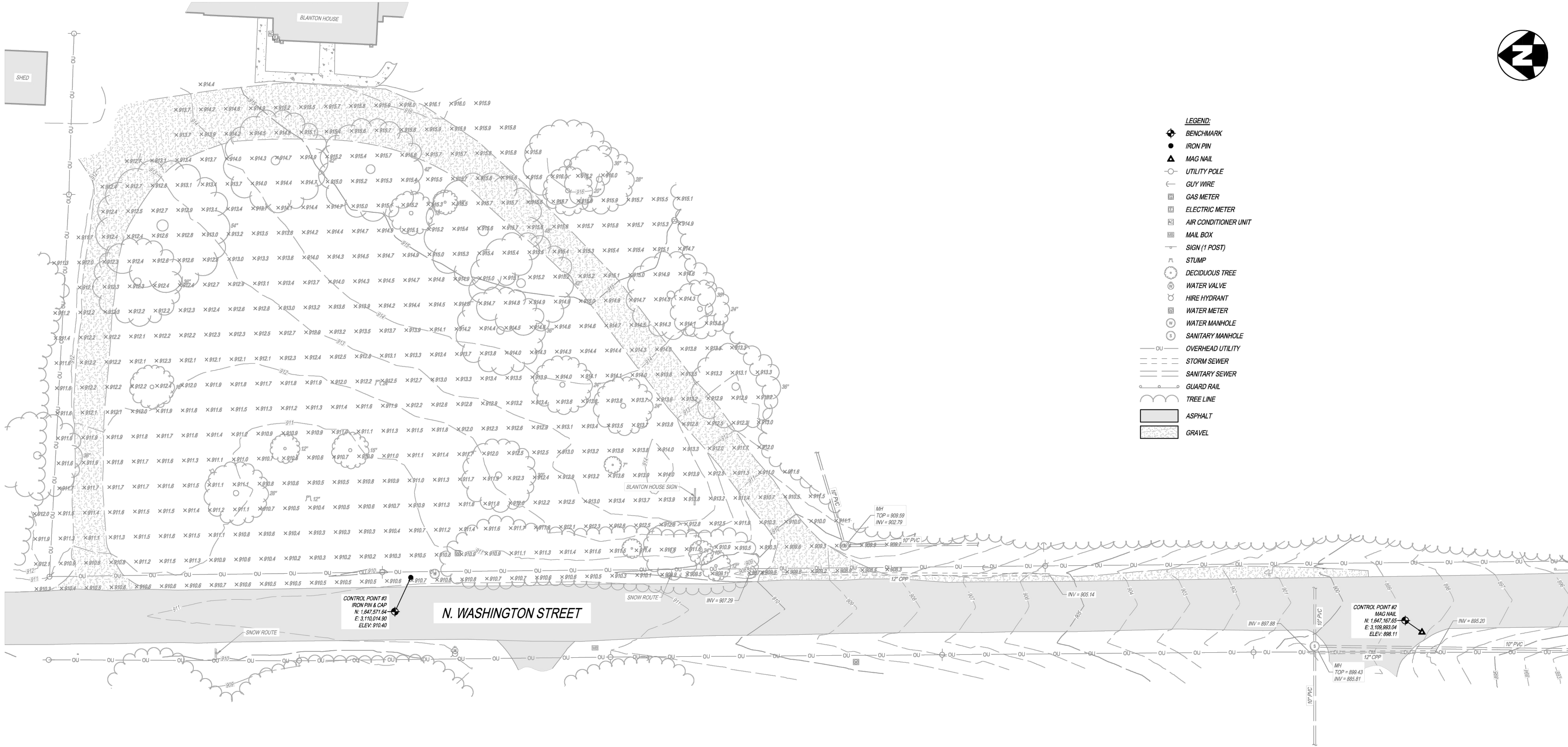
NORTH

SHEET NUMBER



© 2025 J2 Design Studio





NOTES:

- DISTANCE UNITS ARE BASED ON THE US SURVEY FOOT DEFINITION (1' = 1200/3837 METERS).
- HORIZONTAL AND VERTICAL DATUMS ARE BASED ON THE INDIANA STATE PLANE COORDINATE SYSTEM WEST ZONE (1302) AS DERIVED FROM INDOT'S (VIRTUAL REFERENCE STATION) SYSTEM (NAD 83 (2011)) (NAVD 88). THE GEOID USED WAS GEOID 18.
- SITE BENCHMARK AS SHOWN HEREON.
- TOPOGRAPHIC INFORMATION IS BASED ON CONVENTIONAL SURVEYING METHODS.

SURVEY NOTES

- Original survey provided by The Kleingers Group in September 2025.
- Site survey has been clipped to fit onto sheet. Originals are available as requested.

NOTE:
UNDERGROUND UTILITIES ARE PLOTTED FROM A COMPILATION OF AVAILABLE RECORD INFORMATION AND SURFACE INDICATIONS OF UNDERGROUND STRUCTURES AND MAY NOT BE INCLUSIVE. PRECISE LOCATIONS AND THE EXISTENCE OR NON EXISTENCE OF UNDERGROUND UTILITIES CANNOT BE VERIFIED. PLEASE NOTIFY THE INDIANA UTILITY PROTECTION SERVICE AT 811 OR 1-800-382-5544 BEFORE ANY PERIOD OF EXCAVATION OR CONSTRUCTION ACTIVITY.



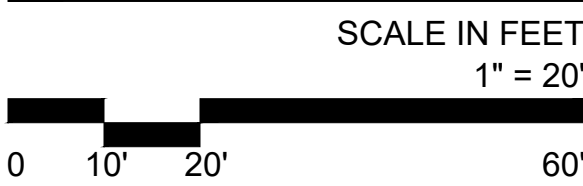
ISSUED
October 2, 2025
REVISIONS

No	Date	Issue

CHECKED BY
JS

DRAWN BY
JS

SHEET TITLE
Site Survey



NORTH

SHEET NUMBER

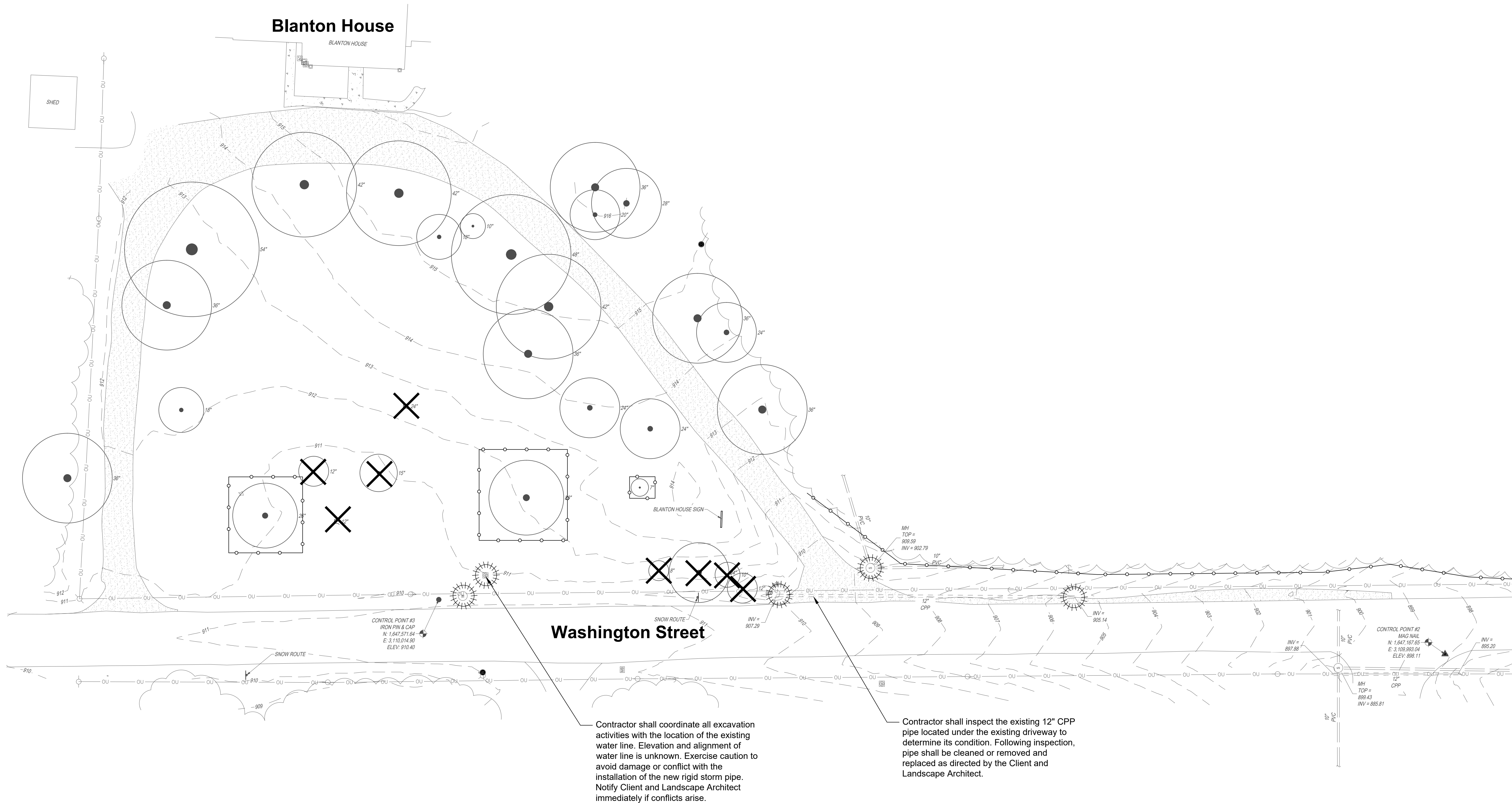
L1.0

© 2025 J2 Design Studio

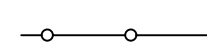
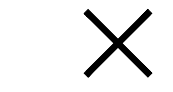

PREPARED FOR
Town of Danville
Parks and Recreation

PROJECT
The Blanton House
Front Entry Improvements

625 North Washington Street, Danville, IN 46122



LEGEND

-  Tree protection fencing. See Detail 1 & 2, Sheet L5.2
-  Item to be removed
-  Utility protection

DEMOLITION NOTES

- Drawings indicate general locations and limits of removals. Contractor shall perform removals only as required for construction of improvements and as indicated on drawings. If additional demolition is completed, contractor is responsible to repair or restore to the original condition at contractor's own expense.
- Contractor shall install erosion control measures prior to commencing construction operations. Maintain erosion control measures as necessary during construction and remove prior to substantial completion.
- Tree protection fencing to be installed prior to and maintained throughout construction period. No storage of materials, vehicular access or any other construction activities whatsoever permitted within the tree protection barriers, unless noted on plan.
- Protect items designated to remain. Contractor shall repair or replace all damaged items to condition equal to or better than condition prior to construction.
- 'Removal' shall include complete removal of above grade items and below grade items including, but not limited to, foundations, aggregate base, wiring, and piping that are immediately adjacent to the item being removed.
- Where trees or stumps are to be removed, grind out stump to a depth of 18\".
- Refer to grading and drainage drawings for additional utility adjustments, removals or abandonment.
- Protect catch basins, drains, sewer inlets, utilities etc from debris and sedimentation during demolition and construction. Install geotextile filter fabric below inlet castings on or off-site that receive storm water from construction activities.
- If discrepancies are discovered between construction documents and existing site conditions during demolition and construction operations contact the Landscape Architect immediately for resolution.

PREPARED FOR
Town of Danville Parks and Recreation

PROJECT
The Blanton House Front Entry Improvements
625 North Washington Street, Danville, IN 46122

ISSUED
October 2, 2025
REVISIONS

No	Date	Issue

CHECKED BY
JS

DRAWN BY
JS

SHEET TITLE
Demolition Plan

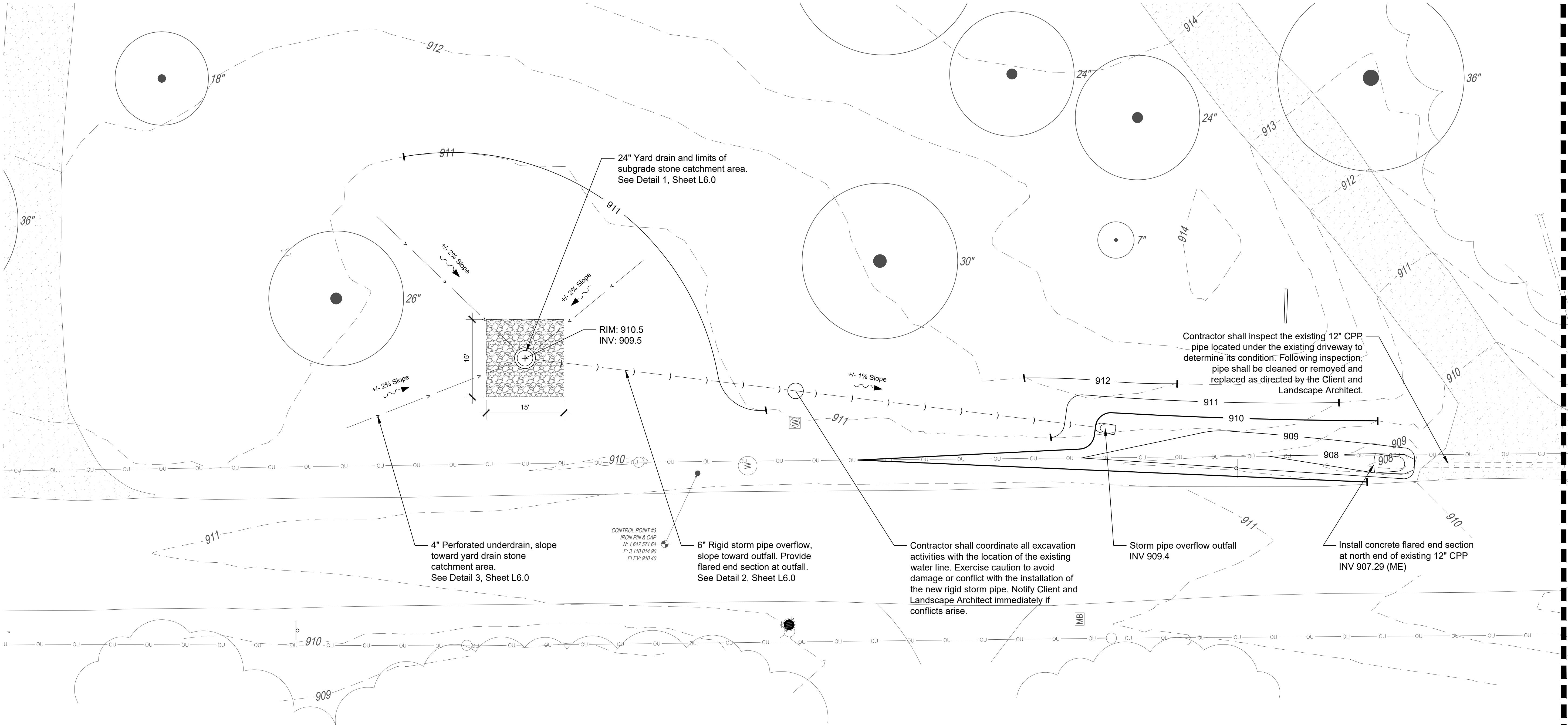
SCALE IN FEET
1" = 20'
0 10' 20' 60'

NORTH

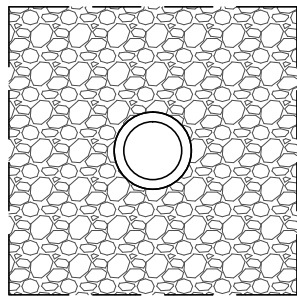
SHEET NUMBER
L2.0
© 2025 J2 Design Studio



© 2025 J2 Design Studio



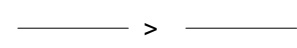
LEGEND



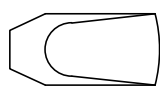
Yard Drain and Limits of Subgrade
Stone Catchment Area
See Detail 1, Sheet L6.0



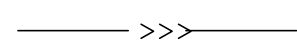
Rigid Storm Pipe
See Detail 2, Sheet L6.0



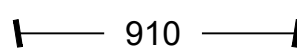
Perforated Underdrain
See Detail 3, Sheet L6.0



Concrete Flared End Section
See Detail 4, Sheet L6.0



Swale flowline



Proposed Grade

GENERAL NOTES

- Contractor shall verify all utility locations (existing and proposed) along with existing conditions and grades (existing and proposed), and note any discrepancies to Owner, Engineer, and Landscape Architect immediately, before proceeding with any work.
- Base information for these plans was taken from the site survey. Contractor shall verify all dimensions and locations of existing and proposed features, and familiarize themselves with any obstacles encumbering the work of this project.
- Contractor is responsible for field layout of all new improvements. The Landscape Architect is to verify in field all layout and locations prior to installation. Contact Landscape Architect for resolution of discrepancies between existing conditions and design intent as expressed in contract documents.
- Contractor is responsible for maintaining or adjusting elevation in work area to not impact existing street signage, utilities, or other improvements identified to remain.

PREPARED FOR
Town of Danville Parks and Recreation

PROJECT
The Blanton House Front Entry Improvements
625 North Washington Street, Danville, IN 46122

ISSUED
October 2, 2025
REVISIONS

No	Date	Issue

CHECKED BY
JS

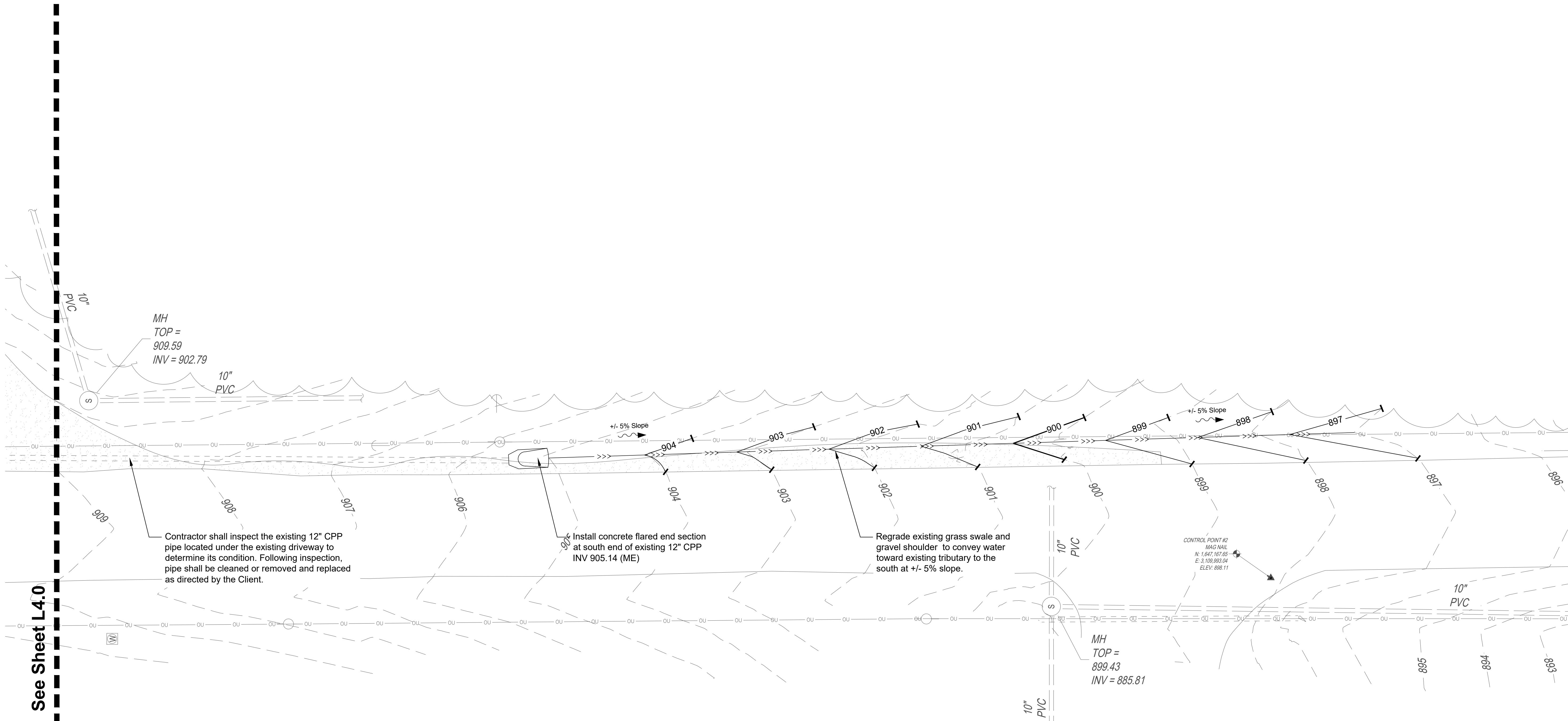
DRAWN BY
JS

SHEET TITLE
Grading and Drainage Plan Enlargement

SCALE IN FEET
1" = 10'
0 5' 10' 30'

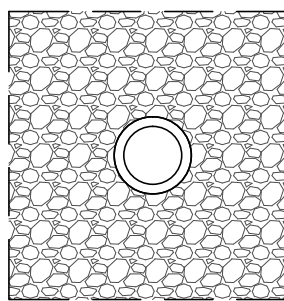
NORTH

SHEET NUMBER
L4.0



See Sheet L4.0

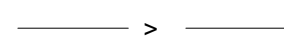
LEGEND



Yard Drain and Limits of Subgrade
Stone Catchment Area
See Detail 1, Sheet L6.0



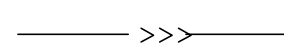
Rigid Storm Pipe
See Detail 2, Sheet L6.0



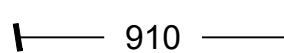
Perforated Underdrain
See Detail 3, Sheet L6.0



Concrete Flared End Section
See Detail 4, Sheet L6.0



Swale flowline



Proposed Grade

GENERAL NOTES

- Contractor shall verify all utility locations (existing and proposed) along with existing conditions and grades (existing and proposed), and note any discrepancies to Owner, Engineer, and Landscape Architect immediately, before proceeding with any work.
- Base information for these plans was taken from the site survey. Contractor shall verify all dimensions and locations of existing and proposed features, and familiarize themselves with any obstacles encumbering the work of this project.
- Contractor is responsible for field layout of all new improvements. The Landscape Architect is to verify in field all layout and locations prior to installation. Contact Landscape Architect for resolution of discrepancies between existing conditions and design intent as expressed in contract documents.
- Contractor is responsible for maintaining or adjusting elevation in work area to not impact existing street signage, utilities, or other improvements identified to remain.

PREPARED FOR
Town of Danville
Parks and Recreation

PROJECT
The Blanton House
Front Entry Improvements

625 North Washington Street, Danville, IN 46122

ISSUED
October 2, 2025
REVISIONS

No	Date	Issue

CHECKED BY
JS

DRAWN BY
JS

SHEET TITLE
Grading and Drainage Plan
Enlargement

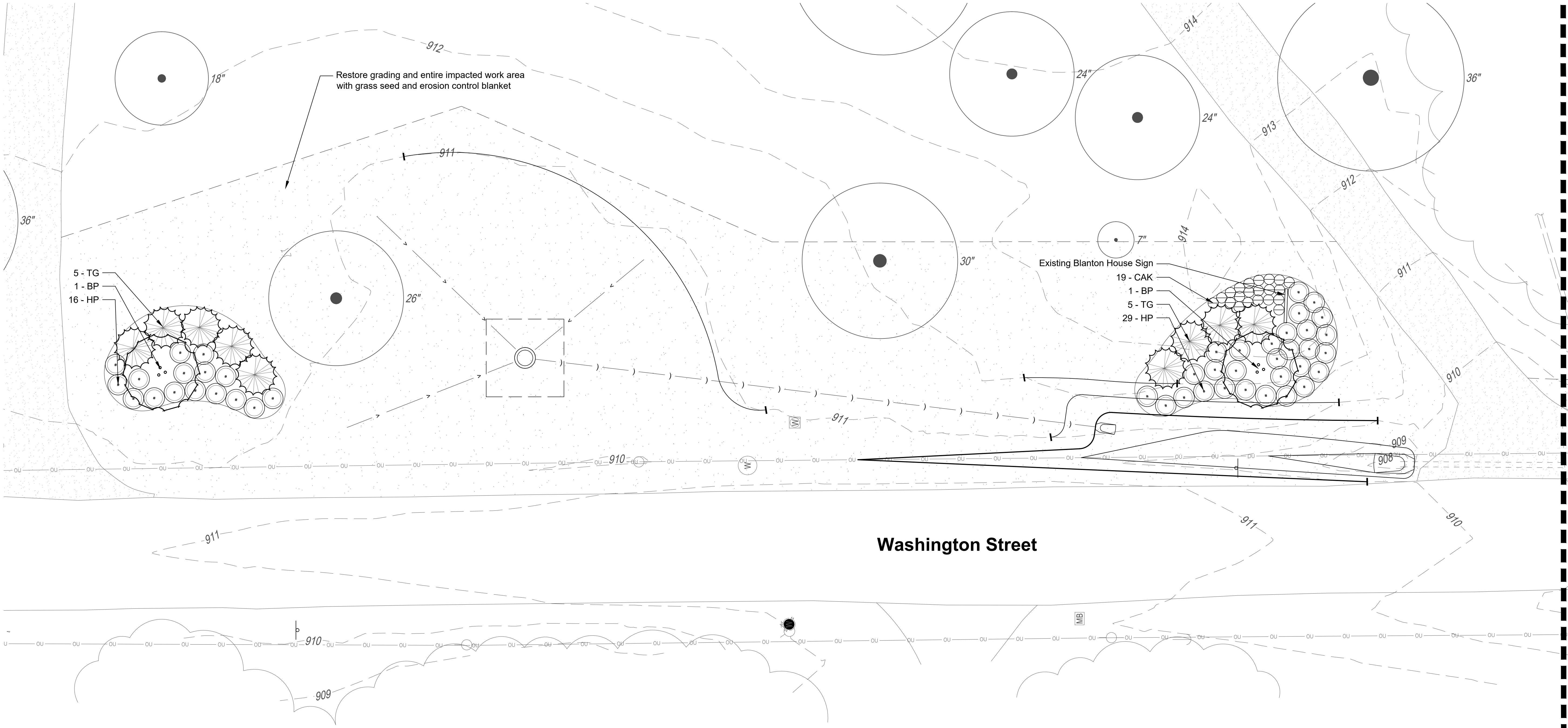
SCALE IN FEET
1" = 10'
0 5' 10' 30'

NORTH

SHEET NUMBER

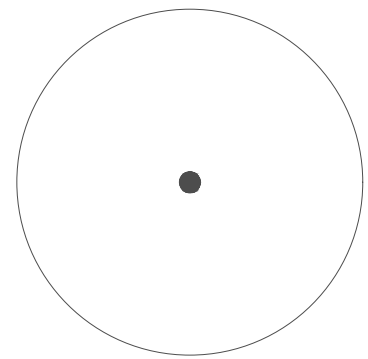
L4.1

© 2025 J2 Design Studio

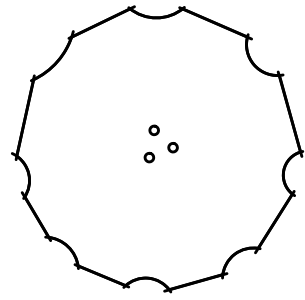


See Sheet L5.1

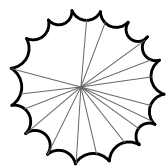
LEGEND



Existing Tree
See Detail 1 and 2, Sheet L5.2



Ornamental Tree
See Detail 3, Sheet L5.2



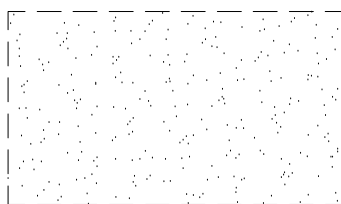
Evergreen Tree
See Detail 4, Sheet L5.2



Shrub
See Detail 5 and 7, Sheet L5.2



Ornamental Grass
See Detail 6 and 7, Sheet L5.2



Lawn Seed

PLANTING NOTES

- Plants and other materials are quantified and summarized for the convenience of the Owner and jurisdictional agencies only. Confirm and install sufficient quantities to complete the work as drawn. No additional payments will be made for materials required to complete the work as drawn.
- Stake tree and shrub locations and planting bed layout for approval by landscape architect prior to installation. Tree and shrub locations shall be marked with a stake bearing a legible note indicating variety and size of tree. Planting bed edges shall be marked with a highly visible paint line. Stakes shall be removed prior to substantial completion. Landscape Architect reserves the right to make adjustments to plant locations. Plant material installed in incorrect locations shall be reinstalled at no additional cost.
- Do not locate plants within 10' of utility structures or within 5' horizontally of underground utility lines unless noted otherwise on drawings.
- Substitutions of plant materials shall not be allowed. If plants are not available, the contractor shall notify the landscape architect prior to the bid in writing. All plants shall be inspected and tagged with project identification at nursery or contractor's operations prior to moving to the site. Landscape Architect reserves the right to reject plant materials on-site that do not meet project requirements.
- All planting soil, whether from on-site or imported, shall be tested as identified in the specifications. Submit testing agency with laboratory report to Landscape Architect for approval, along with recommendations to amending soil as appropriate for use in planting.
- Planting soil shall be installed to the following depths
 - Trees: as noted in the landscape details
 - Shrubs: 24" depth
 - Ornamental Grasses / Perennials / Groundcover: 18" depth
- The contractor shall weed, water, and maintain all plant material until end of required maintenance period and final acceptance by the Owner.
- Contractor shall guarantee and warranty plant materials for a period of one full year following planting substantial completion.
- Planting beds and tree mulch rings shall have a shovel cut spaded edge vertically cut to a depth of 2".
- Tree mulch rings shall be covered with a 3" thickness of shredded hardwood bark mulch. Bark mulch shall be approved by Landscape Architect and be uniform in color and texture. Utility mulch or process tree trimmings will not be allowed.
- Tree mulch rings in lawn areas shall have a 5' diameter unless noted otherwise on drawings.
- Lawn seed or sod limits are approximate. Sow seed or lay sod to limits of grading and disturbance. Contractor shall be responsible for restoration of unauthorized disturbance outside construction limits.

PREPARED FOR
Town of Danville Parks and Recreation

PROJECT
The Blanton House Front Entry Improvements

625 North Washington Street, Danville, IN 46122

ISSUED
October 2, 2025
REVISIONS

No	Date	Issue

CHECKED BY
JS

DRAWN BY
JS

SHEET TITLE
Landscape Plan Enlargement

SCALE IN FEET
1" = 10'
0 5' 10' 30'

NORTH

SHEET NUMBER

L5.0

© 2025 J2 Design Studio

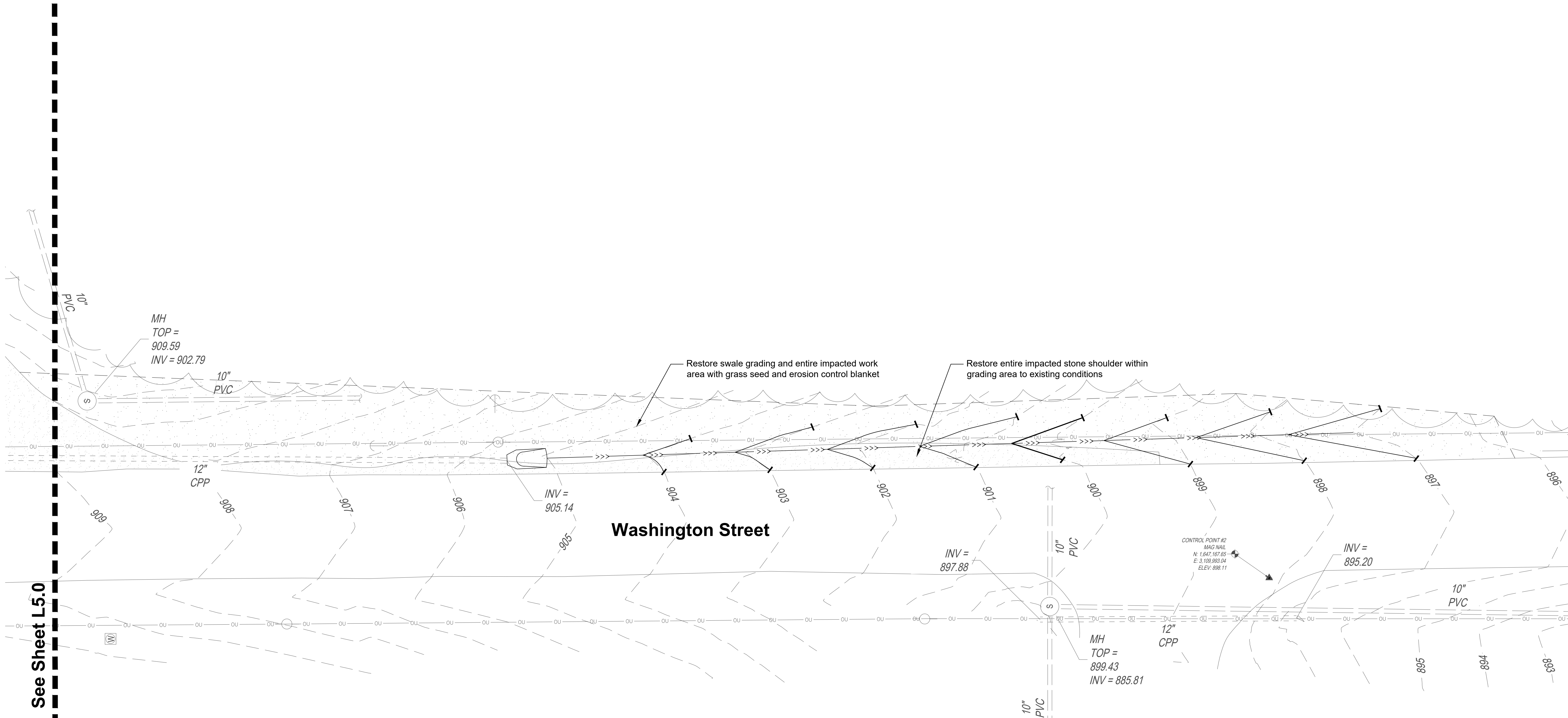
PREPARED FOR

Town of
Danville
Parks and
Recreation

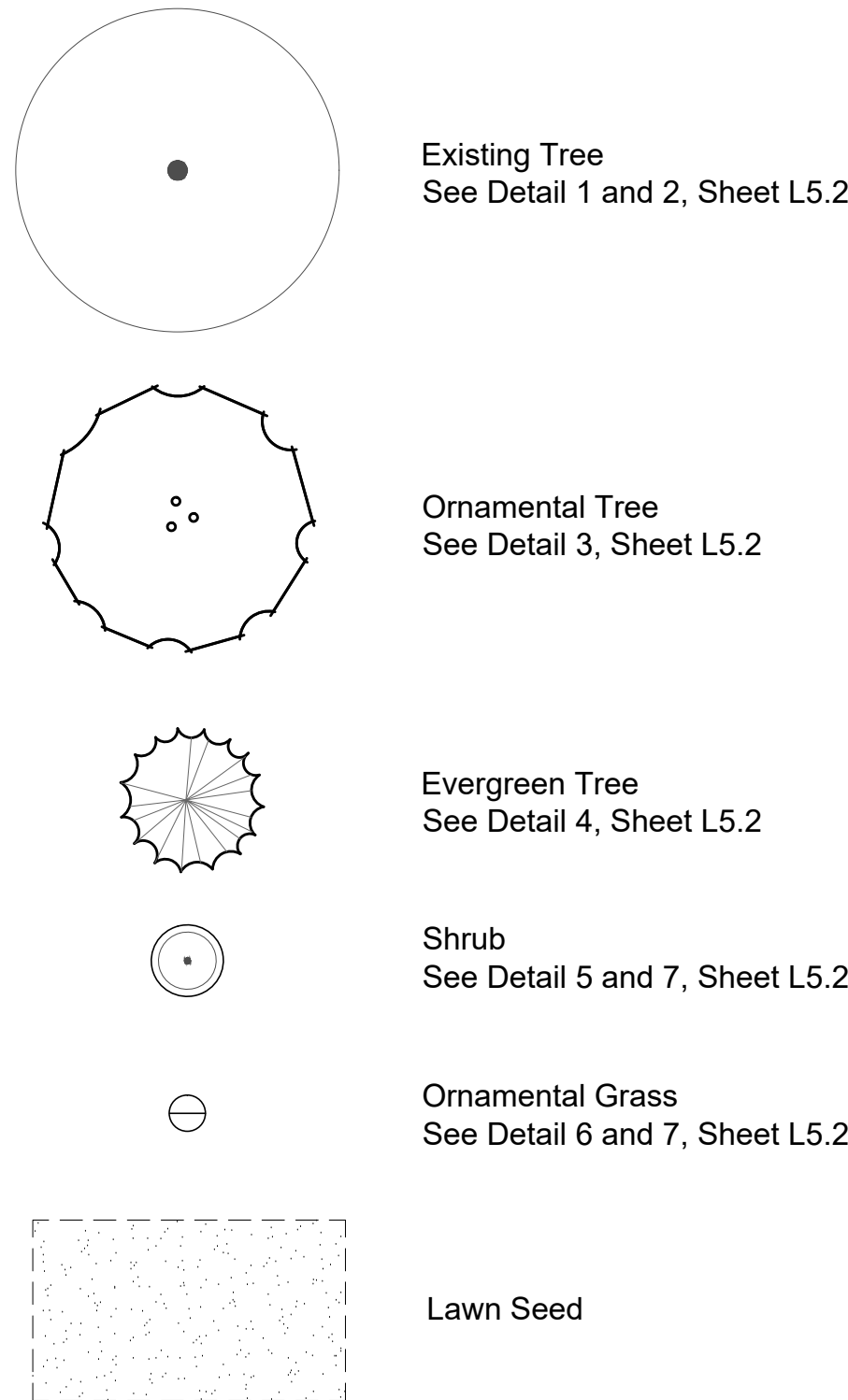
PROJECT

The Blanton
House
Front Entry
Improvements

625 North Washington
Street, Danville, IN 46122



LEGEND



PLANTING NOTES

- Plants and other materials are quantified and summarized for the convenience of the Owner and jurisdictional agencies only. Confirm and install sufficient quantities to complete the work as drawn. No additional payments will be made for materials required to complete the work as drawn.
- Stake tree and shrub locations and planting bed layout for approval by landscape architect prior to installation. Tree and shrub locations shall be marked with a stake bearing a legible note indicating variety and size of tree. Planting bed edges shall be marked with a highly visible paint line. Stakes shall be removed prior to substantial completion. Landscape Architect reserves the right to make adjustments to plant locations. Plant material installed in incorrect locations shall be reinstalled at no additional cost.
- Do not locate plants within 10' of utility structures or within 5' horizontally of underground utility lines unless noted otherwise on drawings.
- Substitutions of plant materials shall not be allowed. If plants are not available, the contractor shall notify the landscape architect prior to the bid in writing. All plants shall be inspected and tagged with project identification at nursery or contractor's operations prior to moving to the site. Landscape Architect reserves the right to reject plant materials on-site that do not meet project requirements.
- All planting soil, whether from on-site or imported, shall be tested as identified in the specifications. Submit testing agency with laboratory report to Landscape Architect for approval, along with recommendations to amending soil as appropriate for use in planting.
- Planting soil shall be installed to the following depths
 - Trees: as noted in the landscape details
 - Shrubs: 24" depth
 - Ornamental Grasses / Perennials / Groundcover: 18" depth
- The contractor shall weed, water, and maintain all plant material until end of required maintenance period and final acceptance by the Owner.
- Contractor shall guarantee and warranty plant materials for a period of one full year following planting substantial completion.
- Planting beds and tree mulch rings shall have a shovel cut spaded edge vertically cut to a depth of 2".
- Tree mulch rings shall be covered with a 3" thickness of shredded hardwood bark mulch. Bark mulch shall be approved by Landscape Architect and be uniform in color and texture. Utility mulch or process tree trimmings will not be allowed.
- Tree mulch rings in lawn areas shall have a 5' diameter unless noted otherwise on drawings.
- Lawn seed or sod limits are approximate. Sow seed or lay sod to limits of grading and disturbance. Contractor shall be responsible for restoration of unauthorized disturbance outside construction limits.

ISSUED

October 2, 2025

REVISIONS

No	Date	Issue

CHECKED BY
JS

DRAWN BY
JS

SHEET TITLE

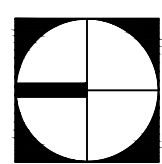
Landscape Plan
Enlargement

SCALE IN FEET

1" = 10'



NORTH



SHEET NUMBER

L5.1

© 2025 J2 Design Studio

Town of
Danville
Parks and
Recreation

The Blanton
House
Front Entry
Improvements

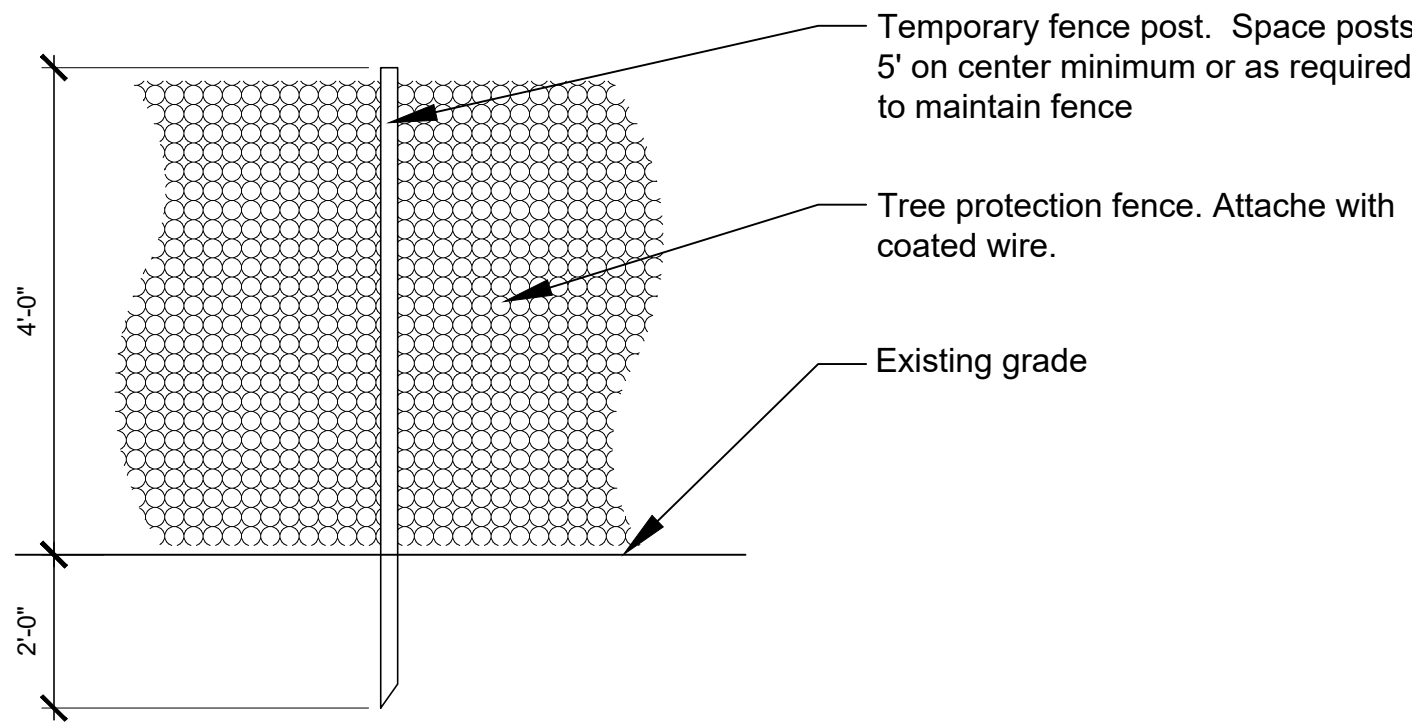
625 North Washington
Street, Danville, IN 46122

No	Date	Issue

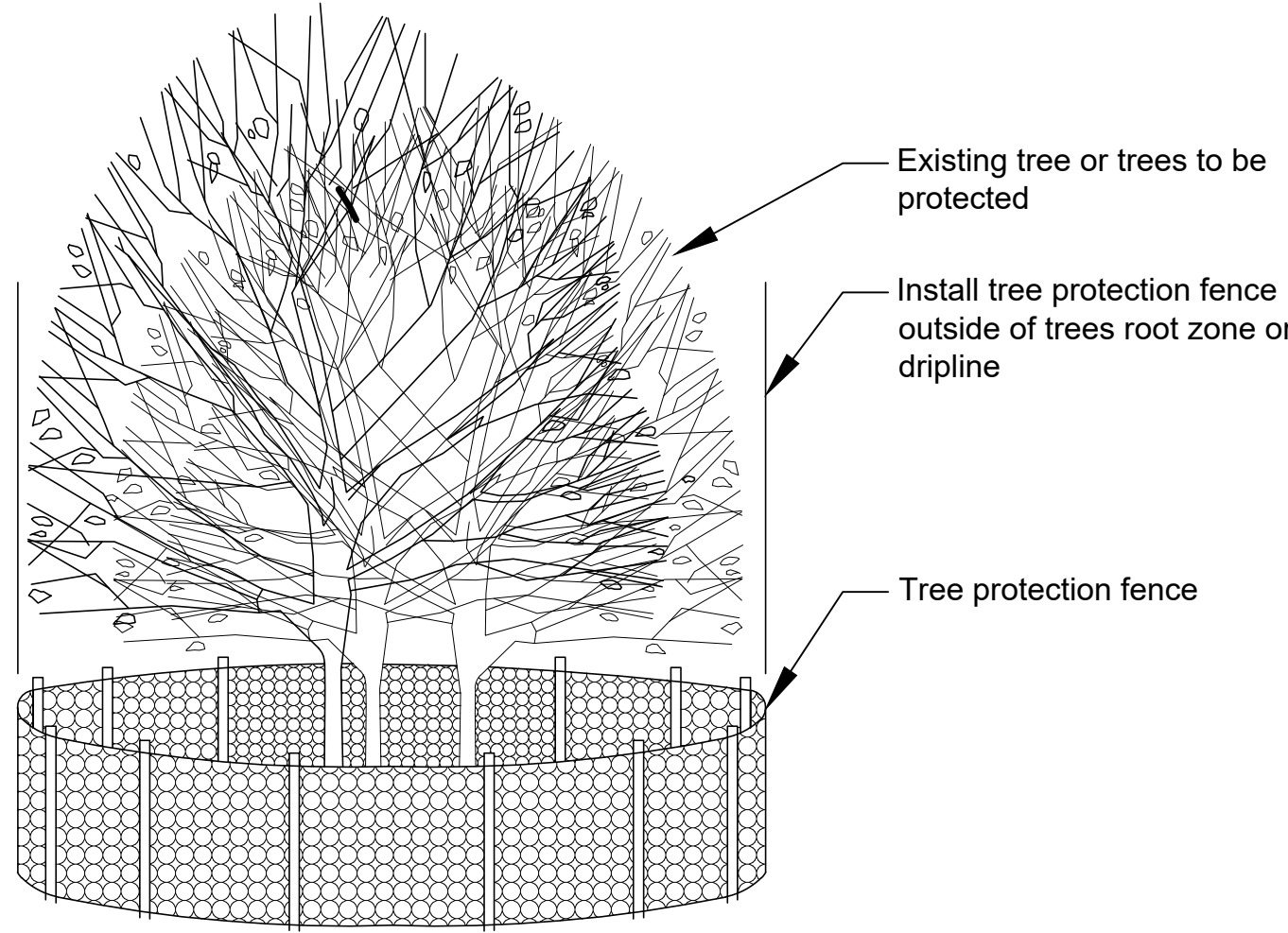
CHECKED BY
JS

DRAWN BY
JS

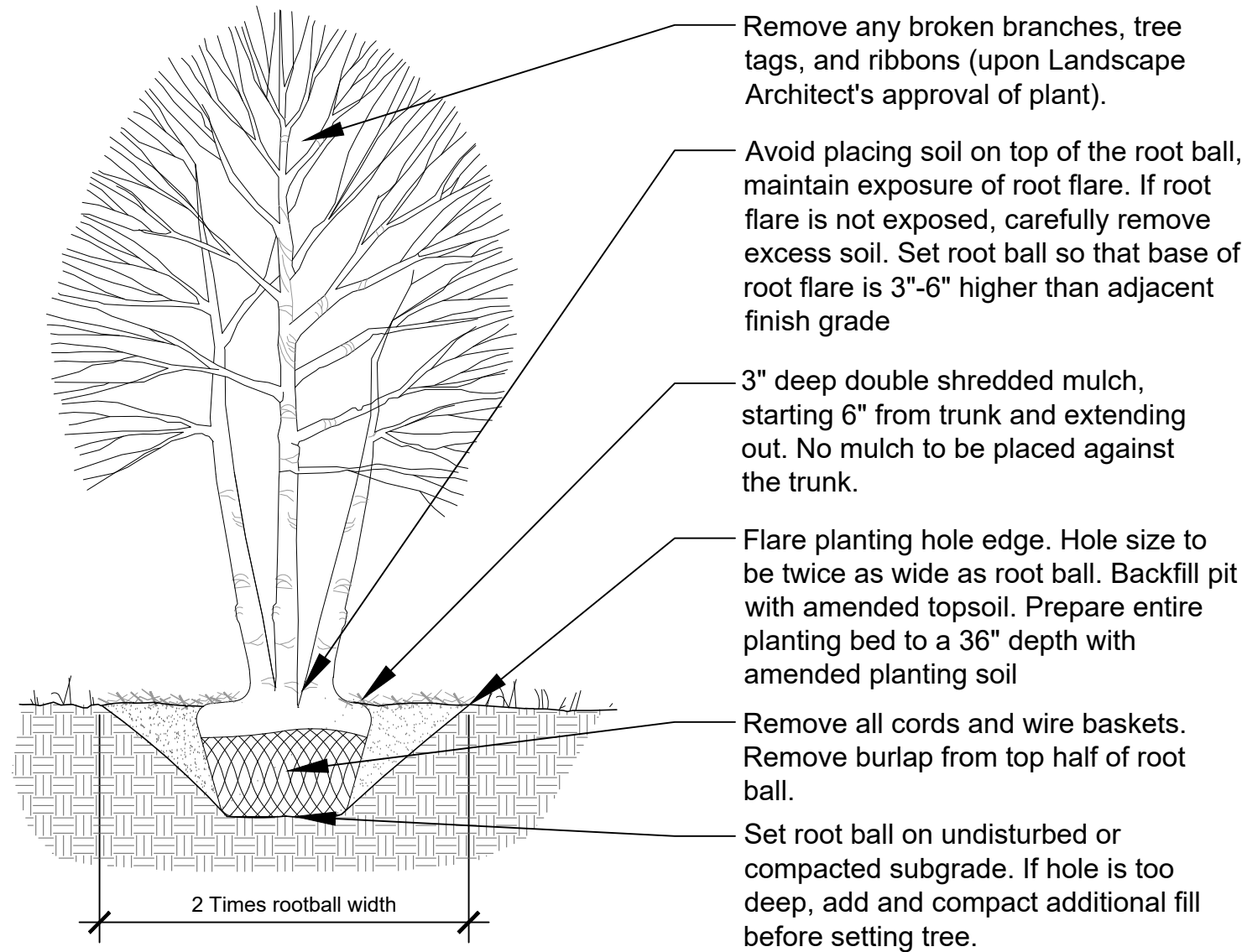
Planting Schedule
& Details



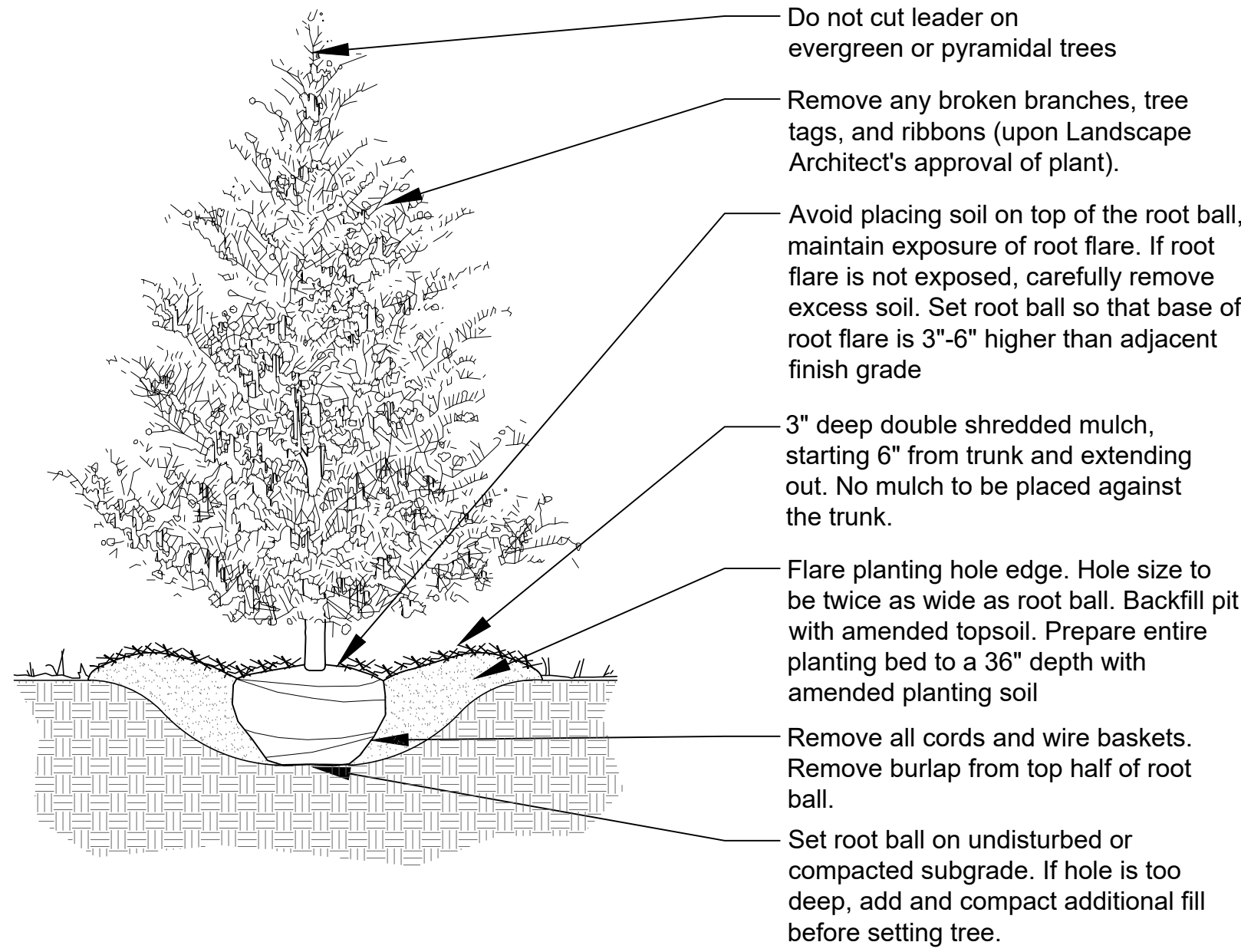
1 Section - Tree Protection Fence
Scale: 1" = 1'-0"



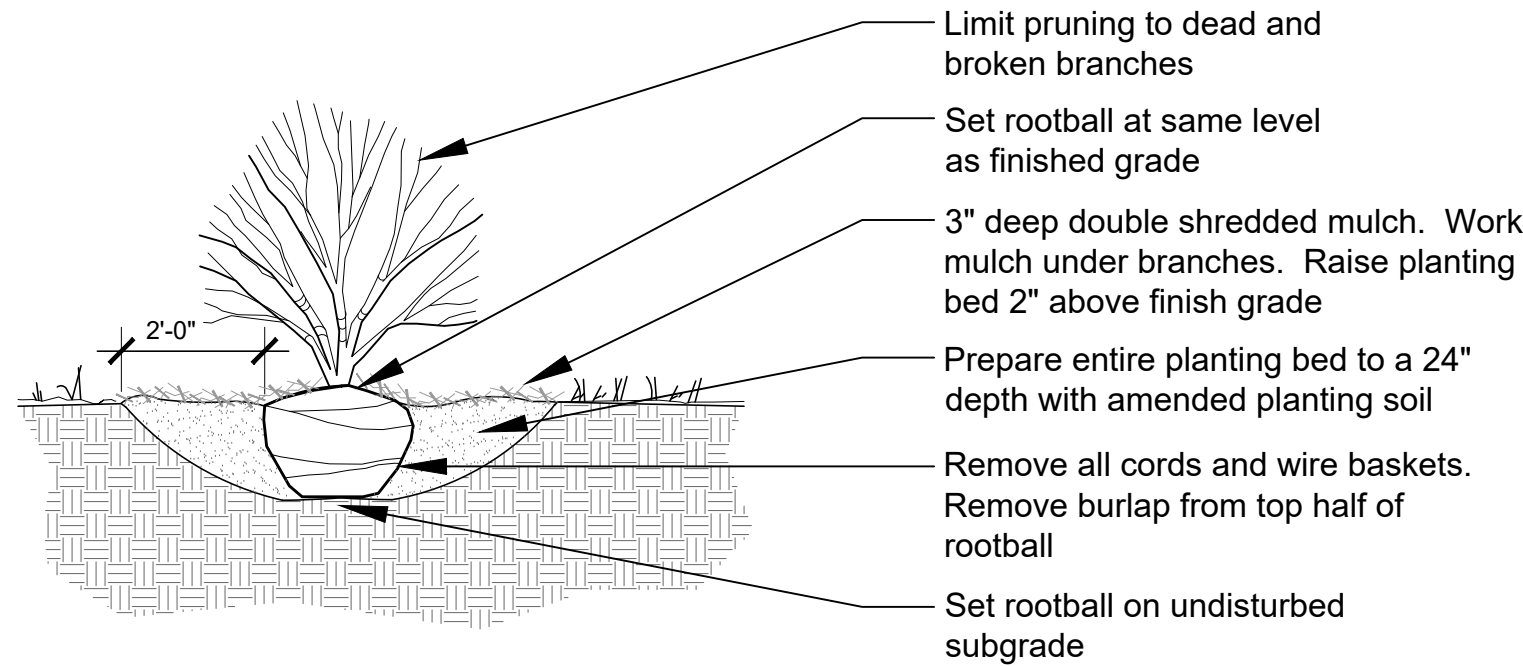
2 Axon - Tree Protection Fencing
Scale: 1" = 1'-0"



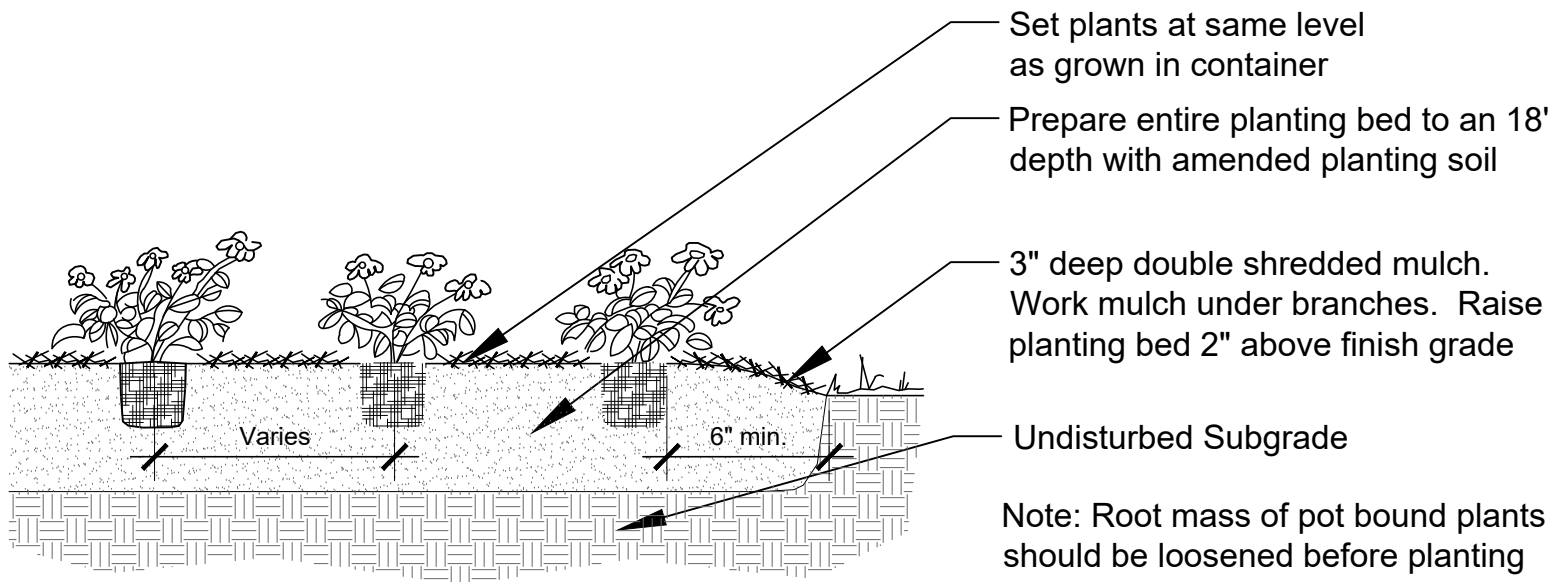
3 Section - Ornamental Tree Planting
Scale: 1/2" = 1'-0"



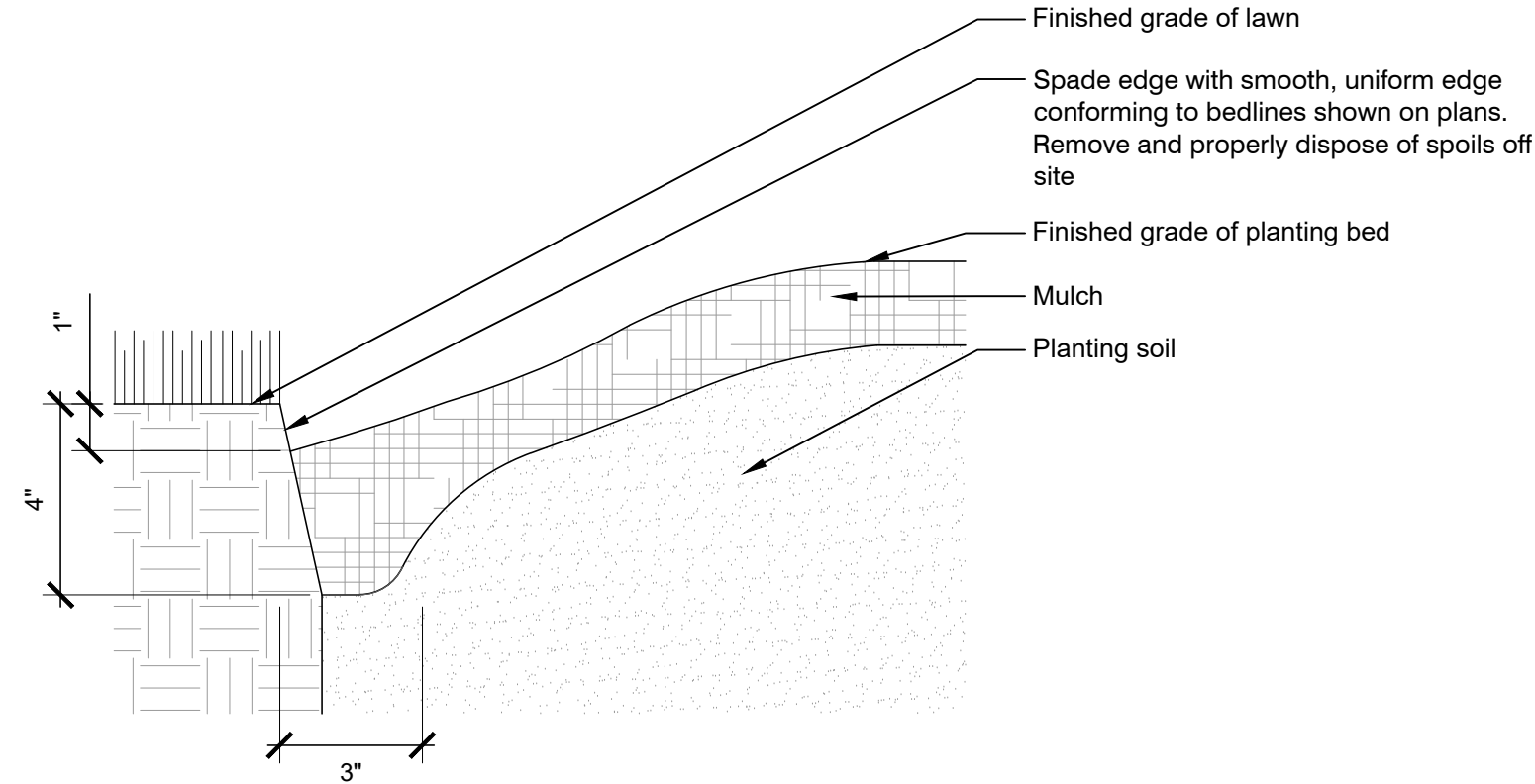
4 Section - Evergreen Tree Planting
Scale: 1/2" = 1'-0"



5 Section - Shrub Planting
Scale: 1/2" = 1'-0"



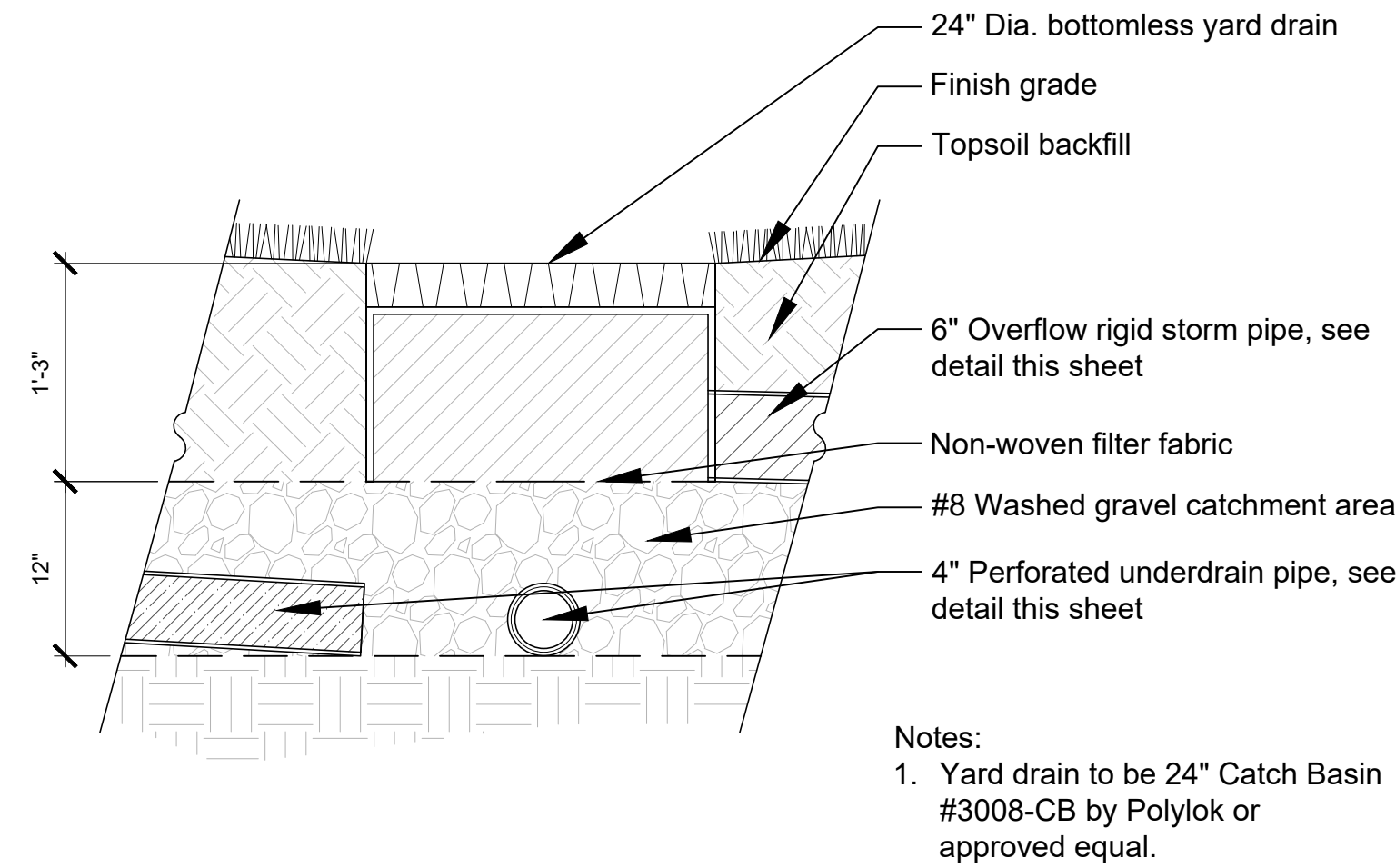
6 Section - Perennial / Ornamental Grass Planting
Scale: 1/2" = 1'-0"



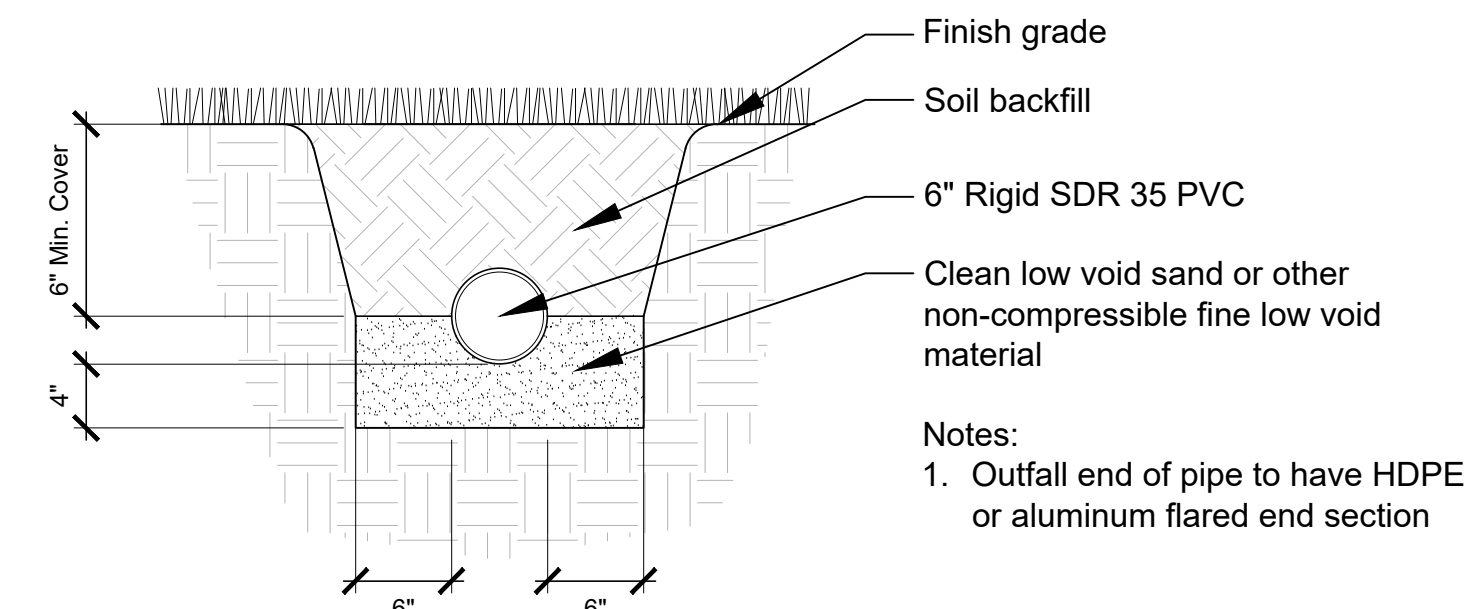
7 Section - Spade Edge
Scale: 3" = 1'-0"

PLANT SCHEDULE

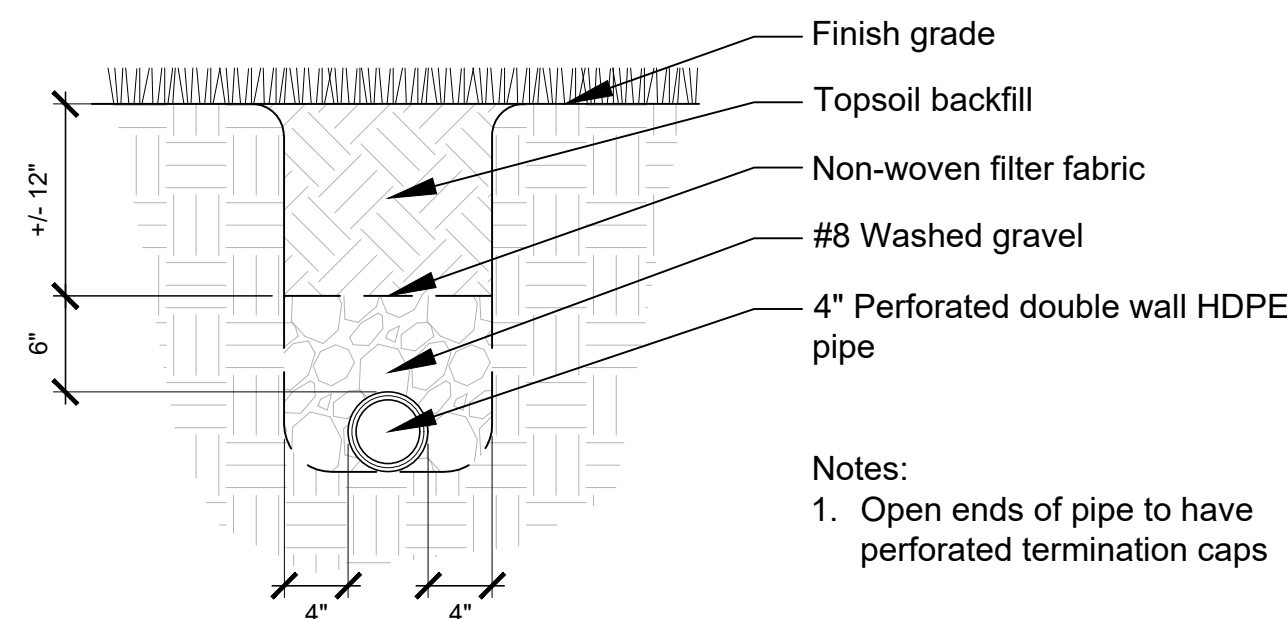
QTY	KEY	BOTANICAL NAME	COMMON NAME	SIZE	COMMENTS
ORNAMENTAL TREES					
2	BP	Betula populifolia 'Whitespire'	Whitespire Birch	10' ht	Spacing as shown on plans
EVERGREEN TREES					
10	TG	Thuja 'Green Giant'	Green Giant Arborvitae	6' ht	Spacing as shown on plans
SHRUBS					
45	HP	Hydrangea paniculata 'Little Lime'	Little Lime Hydrangea	5 gal	Spacing as shown on plans
ORNAMENTAL GRASSES					
19	CAK	Calamagrostis acutiflora 'Karl Foerster'	Karl Foerster Feather Reed Grass	3 gal	Plant 24" on center



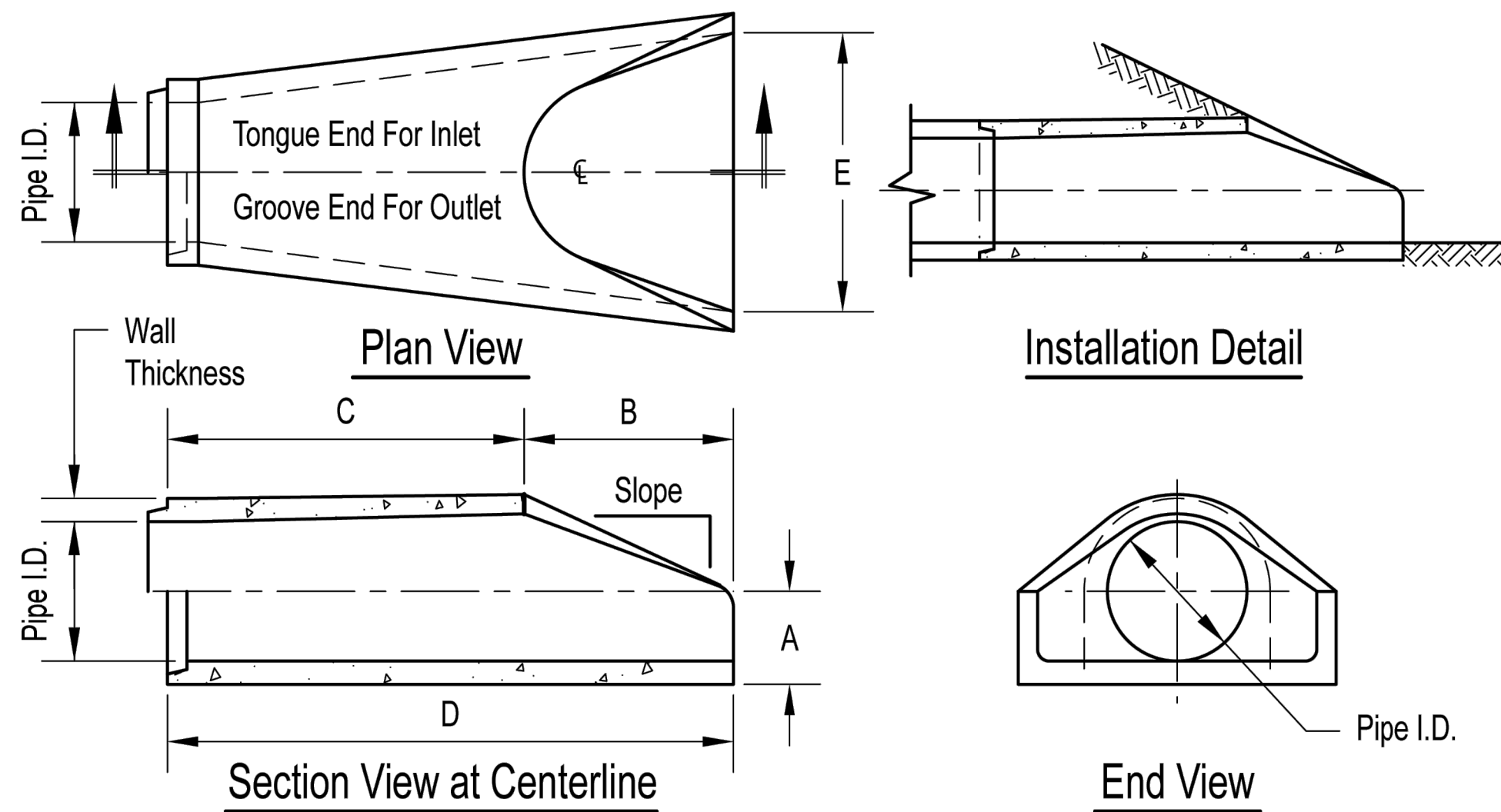
1 Section - Yard Drain
Scale: 1" = 1'-0"



2 Section - Rigid Storm Pipe
Scale: 1" = 1'-0"



3 Section - Perforated Underdrain
Scale: 1" = 1'-0"



Pipe Inner Diameter (inches)	Wall Thickness (inches)	A (inches)	B (inches)	C (inches)	D (inches)	E (inches)	Slope
12	2	4	24	48 7/8	72 7/8	30	3:1
15	2 1/4	6	27	46	73	30	3:1
18	2 1/2	9	27	46	73	36	3:1
24	3	9 1/2	43 1/2	30	73 1/2	48	3:1
30	3 1/2	12	54	19 3/4	73 3/4	60	3:1
36	4	15	63	34 3/4	97 3/4	72	3:1
42	4 1/2	21	63	35	98	78	3:1
48	5	24	72	26	98	84	3:1
54	5 1/2	27	65	35	100	90	2.4:1
60	6	30	60	39	99	96	2:1
66	6 1/2	32	78	21	99	102	2:1
72	7	34	78	21	99	108	2:1

Dimensions may vary depending upon equipment availability.

4 Concrete Flared End Section

PREPARED FOR
Town of Danville
Parks and Recreation

PROJECT
The Blanton House
Front Entry Improvements

625 North Washington Street, Danville, IN 46122

ISSUED
October 2, 2025
REVISIONS

No	Date	Issue

CHECKED BY JS
DRAWN BY JS

SHEET TITLE
Site Details

SCALE IN FEET



NORTH
SHEET NUMBER

L6.0

© 2025 J2 Design Studio