

TOWN OF
DANVILLE
PARKS & RECREATION

PARK BOARD AGENDA

Wednesday, September 27, 2023
@ 6:00pm in Danville Town Hall

- I. Call Meeting to order
- II. Pledge of Allegiance
- III. Determination of Quorum
- IV. Consideration of Minutes
- V. New Business
 1. Bench
 2. Playscape
 3. Budget
 4. Trails (Sub Committee)
 5. Gary Eakin Park landscaping

- VI. Old Business
 1. Rec Update – Half Marathon, Daddy Daughter, Euchre, Family Campout, Parade, Scares on the Square, Winterland
 2. Football Tower – Grass, Electricity, plumbing.
 3. GFAC Update – YTD, Upgrades
 4. DAC Update – Prep HVAC, Conference, Entry Move

- VII. Financials YTD
- VIII. Motion to adjourn

Attachments – Minutes, Financials


**TOWN OF
DANVILLE**
PARKS & RECREATION
Park Board Meeting Minutes
Wednesday 7/26/23

Attendance

Park Board Members Present: David Glover, Tim McRoberts, Peter Trybula, Bill Sutton, Jim Pearcy

Staff Present: Eric Lobosky, Madison Henderson

Town Council Liaison:

Park Board Members & Staff Absent: Will Lacey, Greg Irby

Public: None

Open Meeting

Bill Sutton called the Park Board meeting to order at 6:01pm.

Pledge of Allegiance

Determination of Quorum

A quorum is present.

Consideration of Minutes

A motion to accept the June 28, 2023, Park Board Meeting Minutes by Jim Pearcy, 2nd by David Glover.
Motion passes 5-0.

New Business

1. New Hire-Eric Lobosky stated that we have hired Shane Thatch for the Maintenance Position and he started on Tuesday of this week.
2. Scoreboard Install-Eric Lobosky stated the park installed the new scoreboard at Barnett Field and looks great. Eric Lobosky stated a huge “Thank You” to the Danville Optimist Club for purchasing the new scoreboard at Barnett Field.
3. Budget-Eric Lobosky noted that Will Lacey has made some additional requests to the host fund, but overall, the 2024 Park Budget is the same as last month. A motion to accept the 2024 Proposed Parks Department Budget by David Glover, 2nd by Tim McRoberts. Motion passes 5-0.
4. Football Plan this Season- Eric Lobosky stated that we have been working with the football league on setting up some overflow parking due to the continued Water Plant construction in North Park.
5. Baseball- Eric Lobosky stated we met with Danville Little League Baseball, and they are looking to fundraise for upgrades to the Baseball areas. Eric Lobosky noted that we will submit that list as soon as they get prices for those upgrades.

Old Business

1. Rec Update-Family Campout this past weekend had 14 people attend. Upcoming programs consist of Disc Golf Clinic, Painting in the Park, Evenings in Ellis, Cornhole Tournament, Geocaching, and Intro to Pickleball.
2. Football Tower- Waiting on garage doors & windows.
3. GFAC Update-Numbers look to be on pace with the average, but expenses are up. We will need to do a rate increase next year.
4. DAC Update- We received approval to move forward on Silver Sneakers. We will be meeting on Monday to review forms and process and set a date to go live. Staff have been touching up paint and cleaning areas to fix up.

Reports

A. YTD Financial Report- Profit & Loss statements have been reviewed by Park Board with no questions.

Public Comment:

None

Adjournment

A motion was placed on the floor for adjournment by Tim McRoberts, 2nd by Jim Percy. Motion passes 5-0.

After no further business, meeting was adjourned at 6:27pm

The next board meeting will be 6pm on Wednesday, August 23rd, 2023, located at 49 N. Wayne St., Danville, IN 46122

TITLE	NAME	SIGNATURE	DATE



Parks Budget Request 2024

Town of Danville, IN

		Original Total Budget 2023	Requested Budget 2024	Budget Percentage Change	Why
RECREATION FUND					
Revenue					
2204-4-31100	PARK & REC GEN PROPERTY TAX	333,156.20	333,156.20	0.00%	
2204-4-33501	PARK & REC FIT	3504.62	3504.62	0.00%	
2204-4-33560	PARK & REC EXCISE TAX	23,879.43	23,879.43	0.00%	
2204-4-34711	POOL RECEIPTS (Drawer 1)	120,000.00	120,000.00	0.00%	
2204-4-34713	CONCESSION STAND (Drawer 2)	27,000.00	27,000.00	0.00%	
2204-4-36217	RENTAL FACILITIES	25,000.00	25,000.00	0.00%	
2204-4-36235	PARK & REC CVET	3000.00	3000.00	0.00%	
2204-4-36250	SALES TAX - RENTALS	12,000.00	12,000.00	0.00%	
2204-4-39955	MISC REIMBURSEMENTS	2000.00	2000.00	0.00%	
	Revenue Total:	549,540.25	549,540.25	0.00%	
Expense					
2204-5-500-41330	PERF	0.00	0.00	0.00%	
2204-5-500-41331	SUPPLEMENTAL RETIREMENT	0.00	0.00	0.00%	
2204-5-500-41350	INSURANCE - EMPLOYEE BENEFITS	0.00	0.00	0.00%	
2204-5-500-70410	OASI - MEDI/SS	0.00	0.00	0.00%	
2204-5-542-41100	SALARY/WAGES - REG	373,393.00	373,393.00	0.00%	3-5%
2204-5-542-41114	SALARY/WAGES - PT/SEASONAL	57,854.00	70,000.00	20.99%	Raising \$2/hr
2204-5-542-41118	SALARY/WAGES - OVERTIME	16,250.00	16,250.00	0.00%	
2204-5-542-41330	PERF	53,022.00	53,022.00	0.00%	
2204-5-542-41331	SUPPLEMENTAL RETIREMENT	1,290.00	1,290.00	0.00%	
2204-5-542-41350	INSURANCE - EMPLOYEE BENEFITS	74,117.00	74,117.00	0.00%	
2204-5-542-42100	OFFICE SUPPLIES	750.00	750.00	0.00%	
2204-5-542-42310	EQUIP MAINT SUPPLIES	25,000.00	30,000.00	20.00%	Things are breaking
2204-5-542-42913	RENTAL PROPERTY REFUNDS	1,500.00	1,500.00	0.00%	
2204-5-542-43999	SALES TAX - RENTAL PROPERTY	10,000.00	10,000.00	0.00%	
2204-5-542-70410	OASI PY EXPENSES	34,236.00	34,236.00	0.00%	
2204-5-544-41114	SALARY/WAGES - SEASONAL	80,000.00	80,000.00	0.00%	
2204-5-544-42200	SUPPLIES	30,000.00	35,000.00	16.67%	Cost of items increasing
2204-5-544-42214	CONCESSION SUPPLIES	20,000.00	25,000.00	25.00%	Raising but should produce revenue
2204-5-544-42310	SALES & FOOD/BEV TAX	3,000.00	3,000.00	0.00%	
2204-5-544-70410	OASI PY EXPENSES	6,120.00	6,120.00	0.00%	
	Expense Total:	786,532.00	813,678.00	3.45%	
Fund: 2204 - PARKS	AND RECREATION FUND Surplus (Deficit):	-236,991.75	-264,137.75	11.45%	
Fund: 4403 -					
PARK NON-					
4403-4-34714	FITNESS CENTER - INCOME	225,000.00	225,000.00	0.00%	
4403-4-34715	RECREATION PROGRAM INCOME	45,000.00	45,000.00	0.00%	
4403-4-34718	WINTERLAND REVENUE	45,000.00	45,000.00	0.00%	
4403-4-34720	PARK IMPACT FEES	70,000.00	150,000.00	114.29%	Trails
4403-4-39915	BLANTON HOUSE RENTAL INCOME	60,000.00	60,000.00	0.00%	
4403-4-39953	MISC INCOME	0.00	0.00	0.00%	
	Revenue Total:	445,000.00	525,000.00	17.98%	
Expense					
4403-5-500-41100	SALARY/WAGES	65,157.00	65,157.00	0.00%	
4403-5-500-41114	SALARIES/WAGES - PART TIME	67,860.00	67,860.00	0.00%	
4403-5-500-41330	PERF	9,253.00	9,253.00	0.00%	
4403-5-500-41350	INSURANCE - EMPLOYEE HEALTH	14,690.00	14,690.00	0.00%	
4403-5-500-42225	FITNESS CENTER - EXPENSES	75,000.00	235,000.00	213.33%	Locker Room Remodel
4403-5-500-42230	RECREATION PROGRAM EXP	20,000.00	20,000.00	0.00%	
4403-5-500-42235	PARK EXPENSE	50,000.00	50,000.00	0.00%	
4403-5-500-43151	TRAINING	7,500.00	7,500.00	0.00%	
4403-5-500-43402	PARK IMPACT FEE EXPENSE	200,000.00	200,000.00	0.00%	Trail Funding
4403-5-500-43650	BLANTON HOUSE EXPENDITURES	25,000.00	25,000.00	0.00%	
4403-5-500-70410	OASI - MED/SS	10,177.00	10,177.00	0.00%	
4403-5-500-73240	WINTERLAND	45,000.00	45,000.00	0.00%	
	Expense Total:	589,637.00	749,637.00	27.14%	
Fund: 4403 - PARK NON-REVERTING FUND Surplus (Deficit):		-144,637.00	-224,637.00	55.31%	



2023 Pool Season at a Glance

Income		% Change from 2022
Presale / Programs	\$ 26,517.00	0.7%
Gate income	\$ 83,956.08	7.7%
Concession Income	\$ 32,035.24	4.4%
Total Income	\$ 142,508.32	3.4%
Profit		
Detailed Income		
Income per operational day	\$ 1,979.28	2.0%
May Income (6 days)	\$ 16,936.72	26.4%
June Income (27 days)	\$ 51,270.93	7.4%
July Income (31 days)	\$ 38,663.63	13.3%
August Income (8 days)	\$ 9,120.24	6.7%
Swim Lessons	\$ 5,950.00	43.6%
Reservations	\$ 9,100.00	14.1%
Memberships	\$ 28,092.00	16.2%
Resident Day Passes	\$ 32,775.00	8.1%
Non-Resident Day Passes	\$ 22,274.00	23.9%
Spectator Passes	\$ 1,087.24	38.5%
Resident Twilight Passes	\$ 4,925.00	19.2%
Non-Resident Twilight Passes	\$ 3,416.00	72.7%
Resident 20+ Group Rate	\$ 2,145.00	n/a
Non-Resident 20+ Group Rate	\$ 948.50	n/a
Expenses		
Staffing	\$ 64,310.30	\$65,057.29
Aquatic Supplies	\$ 36,365.06	\$30,831.35
Concessions	\$ 24,725.12	\$21,559.32
Electricity	\$ 2,000.00	\$2,000.00
Water	\$ 500.00	\$500.00
Total Expenses	\$ 127,900.48	\$119,947.96
Attendance Numbers		
Total # of Members	689	6.5%
Total Day Passes	12690	4.9%
Total Check-Ins	17167	1.3%



900417-01
Gill Family Aquatic Center
Splash Pad Proposal

September 20, 2023 by Nirbo Aquatic Inc.



SPLASH PADS MADE EASY



Message from the President



Dear Evaluation Committee,

Thank you for giving us the opportunity to submit the following splash pad proposal for your community. We have experienced many years of successful projects. You can feel confident dealing with us as a well qualified and reliable manufacturer.

Nirbo has designed thousands of splash pads and built hundreds of them over US, Canada, Asia and Europe. Our products meet following standards; ASTM F-1487, ASTM F2461, CSA, Z-614-14 and are also ADA compliant.

We have created a unique splash pad design for your community and believe it fits well with your park environment. We believe we have created a fun, safe and interactive play environment for your children and community.

We appreciate you taking time considering Nirbo for your project and looking forward to further discussing the project details and refine it for your specific needs.

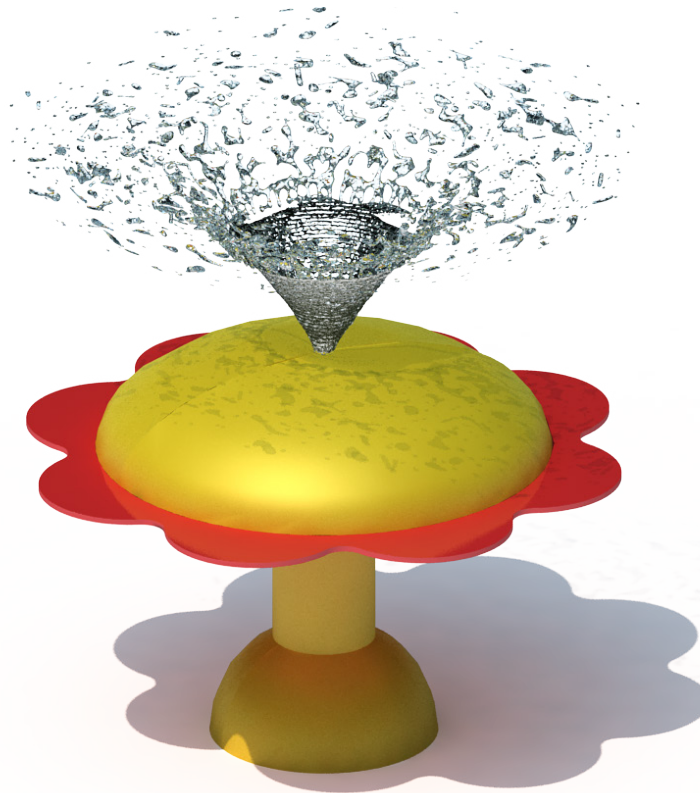
Thanks,

Mehmet Sokmen, P. Eng.
President
Nirbo Aquatic Inc.
Tel: 1-905-766-2461
sal@nirbo.com



Nirbo Aquatic Inc.

39-2400 Lucknow Drive, Mississauga, ON L5S 1T9, Canada
Toll Free: 1.888.68.NIRBO (64726) | Tel: 1.905.766.4474 | Fax: 1.905.766.4467
Website: www.nirbo.com | Email: info@nirbo.com



Nirbo water features are made from high quality stainless steel and engineering plastics materials, therefore they are very durable and have excellent fun factor. There are over one hundred different water features to choose from, this product is just a great example. We use brass or stainless steel nozzles which are ideal materials for the application. This product also turns left and right which makes it highly interactive.

Flower-02 | 03591

GPM	Max PSI	LPM	Max Bar
10	10	40	0.7
Width	Length	Height	
27" (69 cm)	27" (69 cm)	18" (46 cm)	

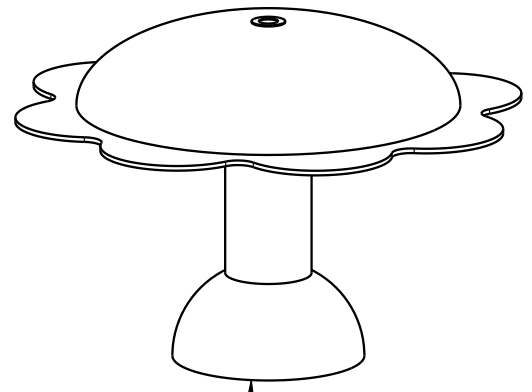
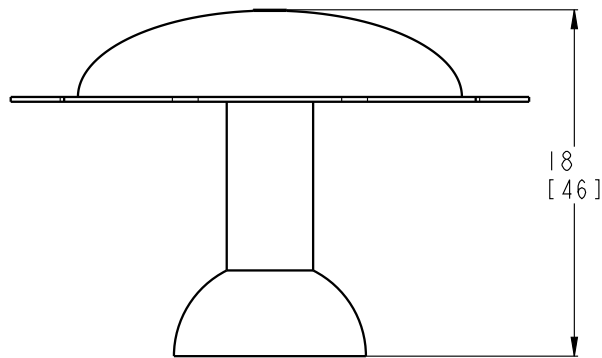
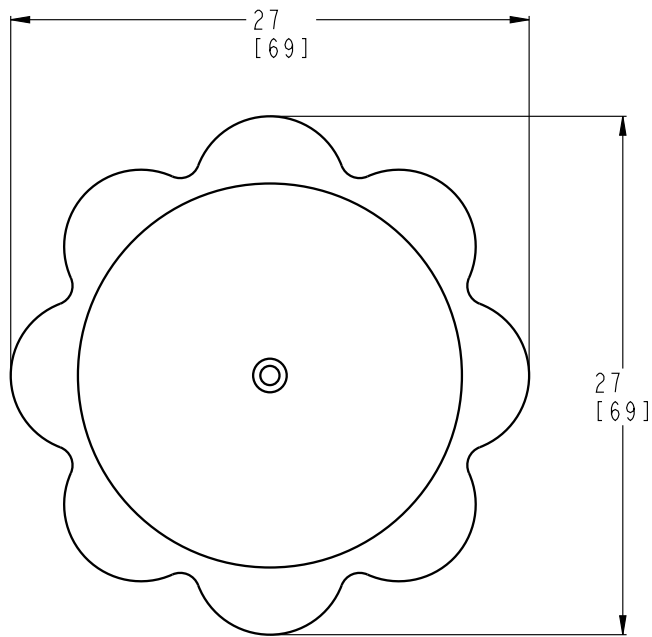
Nirbo Aquatic Inc.

2400 Lucknow Drive, unit 39, Mississauga, ON L5S 1T9, Canada

Toll Free: 1.888.68.NIRBO (64726) | Tel: 1.905.766.4474 | Fax:

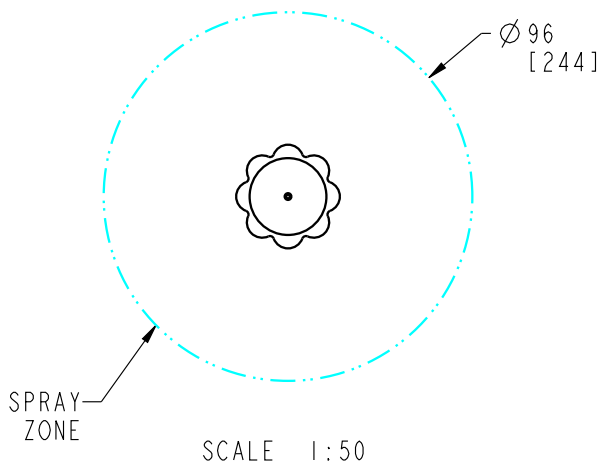
1.905.766.4467

Website: www.nirbo.com | Email: info@nirbo.com



FOR FOOTING DETAILS SEE
DRAWING NO: 03008-33

FLOW (5-10 PSI)	LOW	NORMAL	HIGH
GPM-[LPM]	7[28]	10[40]	15[60]



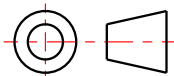
- 1- STRUCTURE: TYPE 304 STAINLESS STEEL
NOZZLE: BRASS OR STAINLESS WITH TEMPER RESISTANT FEATURES
- 2- FINISH: UV RESISTANT POLYESTER POWDER COATING
- 3- PRODUCT INCLUDES:
ANCHOR BOLTS WITH HARDWARE AND FOOTING TEMPLATE
SPRAY NOZZLES
WINTER NOZZLE CAPS
SERVICE TOOLS
TAMPER RESISTANT HARDWARE
- 4- GROUND COMPONENT WITH #6 BARE COPPER WIRE
- 5- PRODUCT COMPLIANCE:
MEETS ADA ACCESSIBILITY GUIDELINES
MEETS CURRENT ASTM F1487 SAFETY STANDARDS

**NIRBO
AQUATIC INC.**

ALL INFORMATION CONTAINED
IN THIS DOCUMENT IS PROPERTY
OF NIRBO AQUATIC INC. AND
MAY NOT BE REPRODUCED OR
COMMUNICATED WITHOUT
PERMISSION IN WRITING FROM
NIRBO AQUATIC INC.

DATE
(yyyy.mm.dd)
2013.11.29

FLOWER,
SURFACE MOUNTED



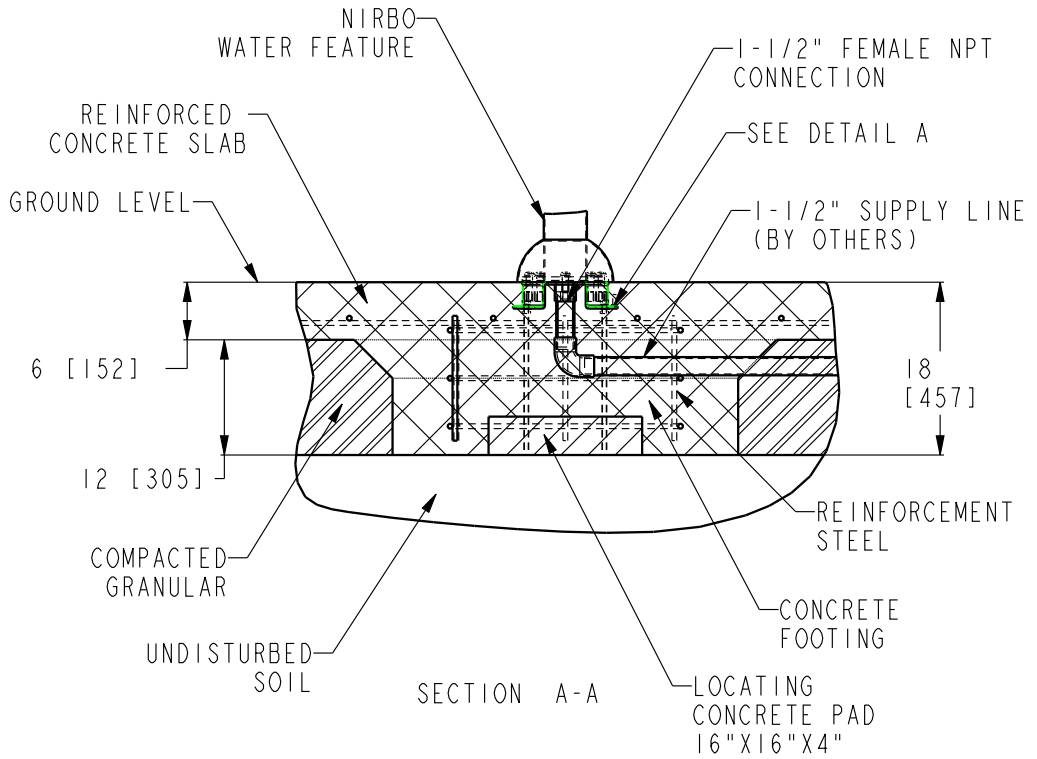
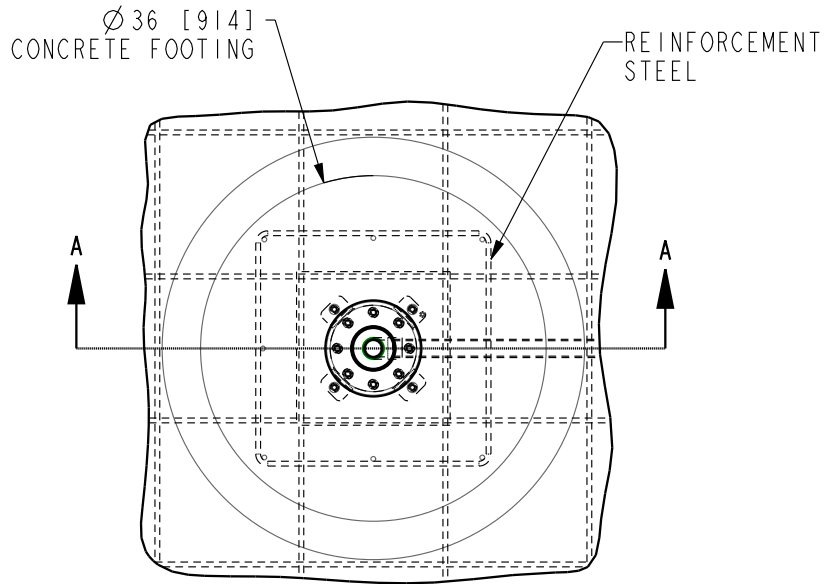
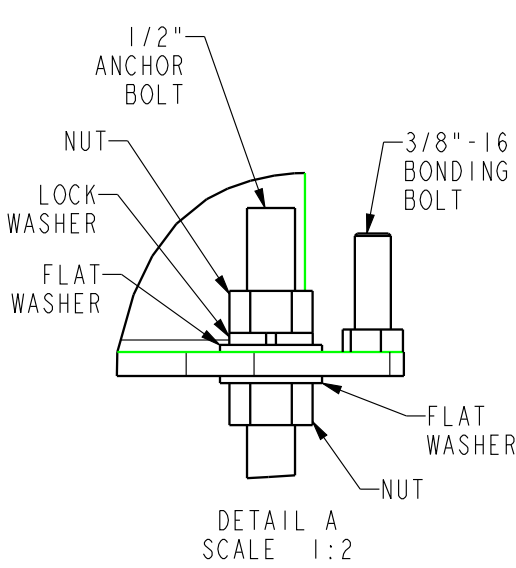
UNIT
INCH
[CM]

SHEET
1 / 2

DRAWING NO
03591-02-D15

REV
01

Nirbo Aquatic Inc.
 Tel: 1-905-766-4474, Fax: 1-905-766-4467, Web: www.nirbo.com



NOTES:

- 1- FOLLOW LOCAL CODES, WHEREVER APPLICABLE.
- 2- GRANULAR BASE THICKNESS SHALL MEET LOCAL BUILDING CODE REQUIREMENTS.
- 3- WATER SUPPLY LINE SHALL BE INSTALLED PER LOCAL BUILDING CODES.
- 4- HARDWARE SUPPLIED BY MANUFACTURER SHALL BE USED.

	NIRBO AQUATIC INC.	ALL INFORMATION CONTAINED IN THIS DOCUMENT IS PROPERTY OF NIRBO AQUATIC INC. AND MAY NOT BE REPRODUCED OR COMMUNICATED WITHOUT PERMISSION IN WRITING FROM NIRBO AQUATIC INC.	DATE (yyyy.mm.dd) 2018.10.24	SURFACE MOUNTED INSTALLATION, 3" & 4" PIPES		
	UNIT INCH [mm]	SHEET 1 / 1	DRAWING NO 03008-33	REV 01		



Nirbo water features are made from high quality stainless steel and engineering plastics materials, therefore they are very durable and have excellent fun factor. There are over one hundred different water features to choose from, this product is just a great example. We use brass or stainless steel nozzles which are ideal materials for the application.



Five Mix | 03206

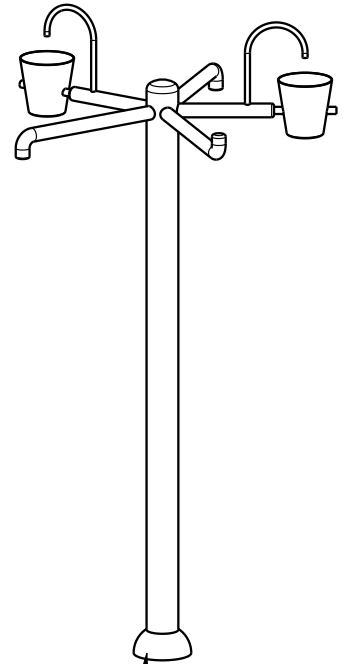
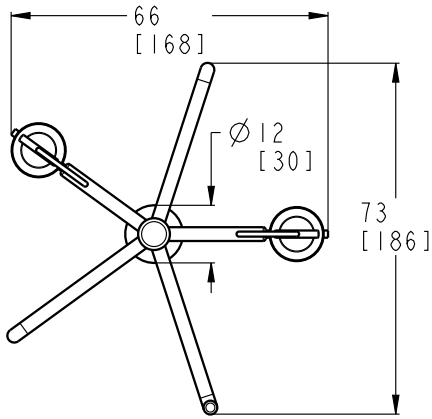
GPM	Max PSI	LPM	Max Bar
30	10	120	0.7
Width	Length	Height	
66" (4168 cm)	73" (186 cm)	136" (345 cm)	

Nirbo Aquatic Inc.

2430 Lucknow Drive, unit 14, Mississauga, ON L5S 1V3, Canada
 Toll Free: 1.888.68.NIRBO (64726) | Tel: 1.905.766.4474 | Fax: 1.905.766.4467
 Website: www.nirbo.com | Email: info@nirbo.com

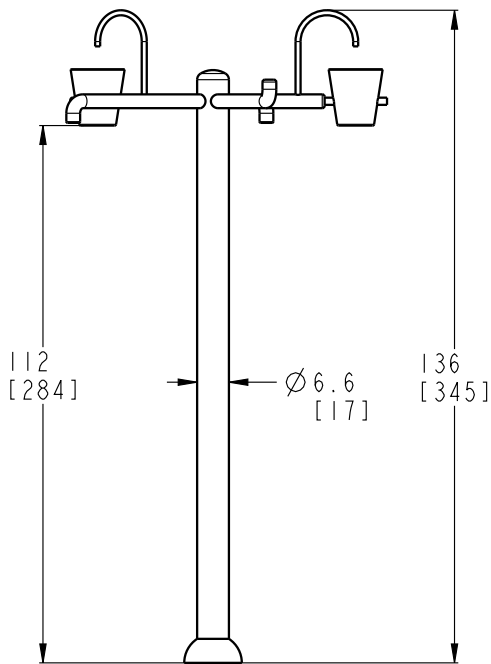
2

1

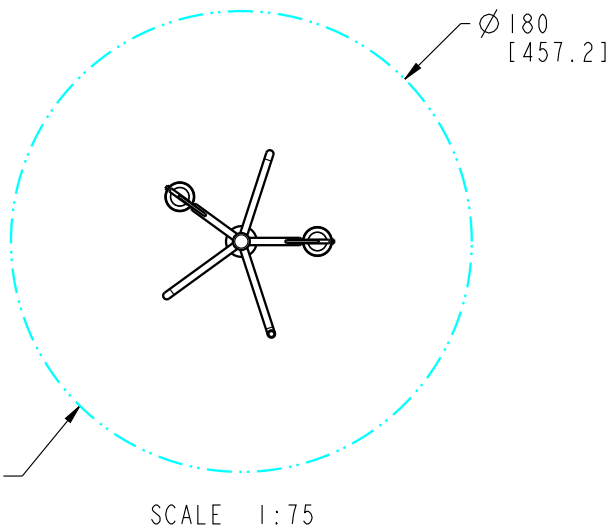


B

B



FOR FOOTING DETAILS SEE
DRAWING NO: 03008-32



A

A

FLOW (5-10 PSI)	LOW	NORMAL	HIGH
GPM-[LPM]	20[80]	30[120]	45[180]

- STRUCTURE: TYPE 304 STAINLESS STEEL
NOZZLE: BRASS WITH TAMPER RESISTANT FEATURES
BUCKET: FRP
- FINISH: UV RESISTANT POLYESTER POWDER COATING
- PRODUCT INCLUDES:
ANCHOR BOLTS WITH HARDWARE AND FOOTING
TEMPLATE, NOZZLES, WINTER NOZZLE CAPS, SERVICE
TOOLS & TAMPER RESISTANT HARDWARE
- BOND COMPONENT WITH #6 BARE COPPER WIRE
- PRODUCT COMPLIANCE:
MEETS ADA ACCESSIBILITY GUIDELINES
MEETS CURRENT ASTM F1487 SAFETY STANDARDS

**NIRBO
AQUATIC INC.**

ALL INFORMATION CONTAINED
IN THIS DOCUMENT IS PROPERTY
OF NIRBO AQUATIC INC. AND
MAY NOT BE REPRODUCED OR
COMMUNICATED WITHOUT
PERMISSION IN WRITING FROM
NIRBO AQUATIC INC.

DATE
(yyyy.mm.dd)
2013.11.13

UNIT
INCH
[CM]

FIVE MIX
TOP MOUNTED

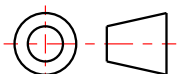
SHEET
1/2

DRAWING NO
03206-02-D15

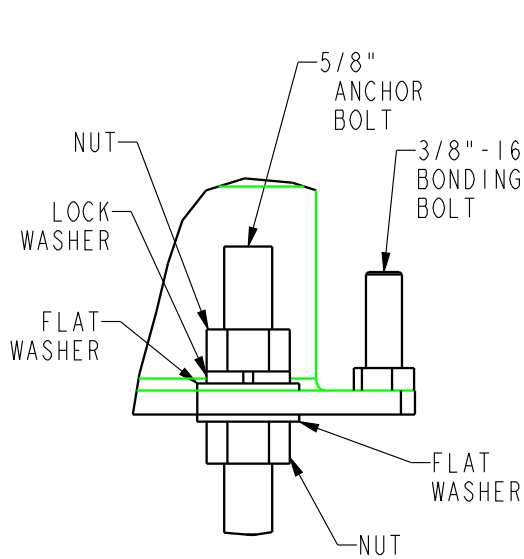
REV
01

2

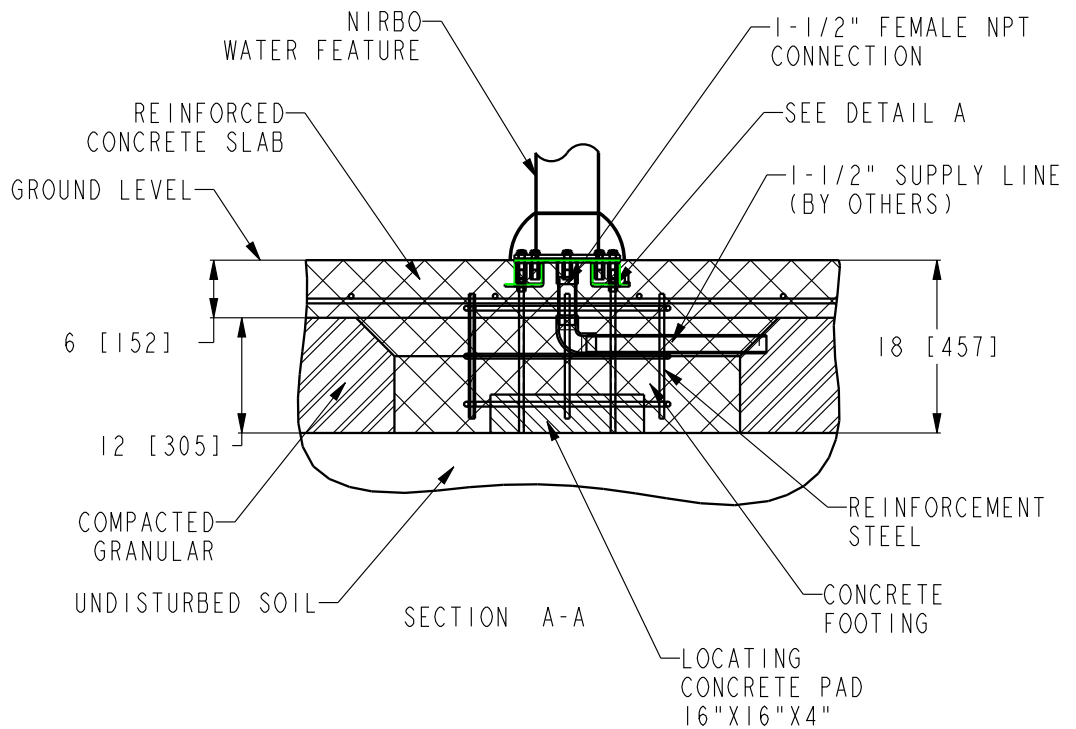
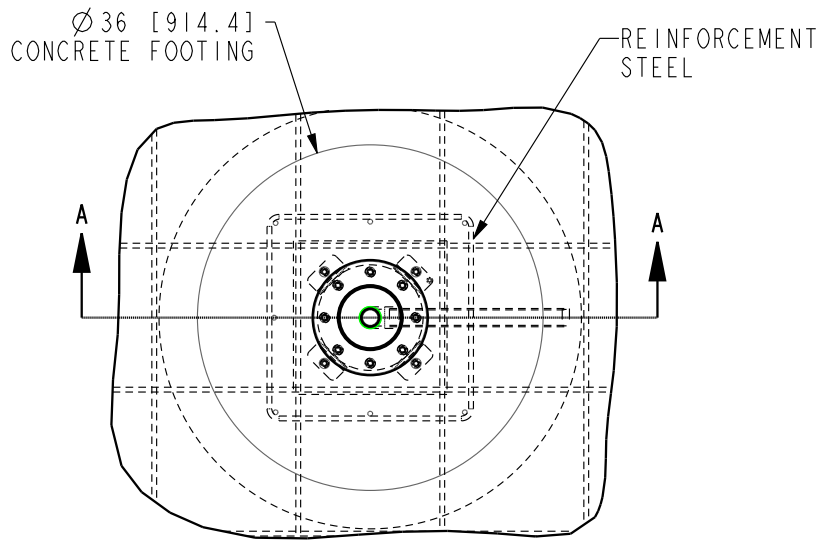
1



Nirbo Aquatic Inc.
 Tel: 1-905-766-4474, Fax: 1-905-766-4467, Web: www.nirbo.com



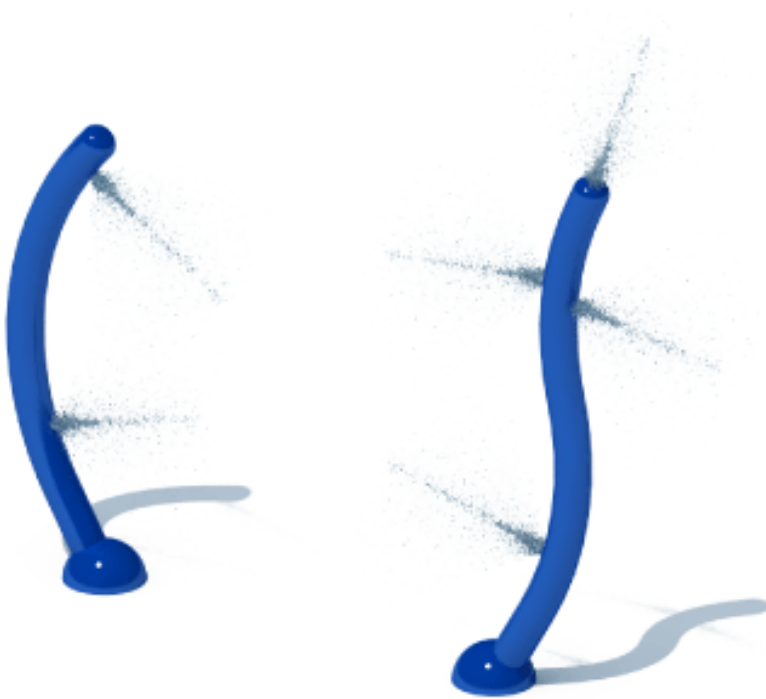
DETAIL A
 SCALE 1:2



NOTES:

- 1- FOLLOW LOCAL CODES, WHEREVER APPLICABLE.
- 2- GRANULAR BASE THICKNESS SHALL MEET LOCAL BUILDING CODE REQUIREMENTS.
- 3- WATER SUPPLY LINE SHALL BE INSTALLED PER LOCAL BUILDING CODES.
- 4- HARDWARE SUPPLIED BY MANUFACTURER SHALL BE USED.

	NIRBO AQUATIC INC.	ALL INFORMATION CONTAINED IN THIS DOCUMENT IS PROPERTY OF NIRBO AQUATIC INC. AND MAY NOT BE REPRODUCED OR COMMUNICATED WITHOUT PERMISSION IN WRITING FROM NIRBO AQUATIC INC.	DATE (yyyy.mm.dd) 2019.01.12	SURFACE MOUNTED INSTALLATION, 6" PIPES		
		UNIT INCH [mm]	SHEET 1 / 1	DRAWING NO 03008-32	REV 01	



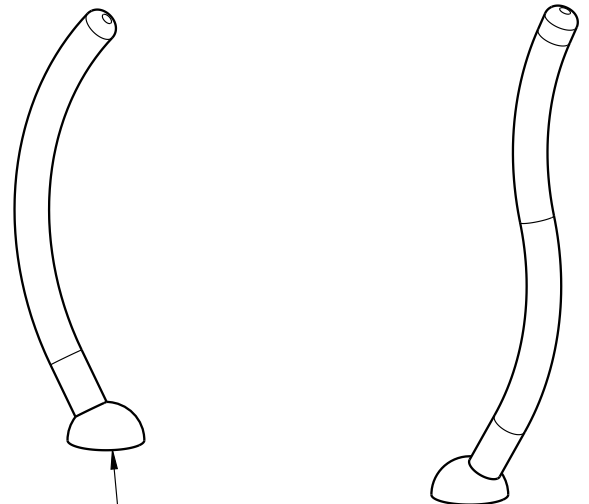
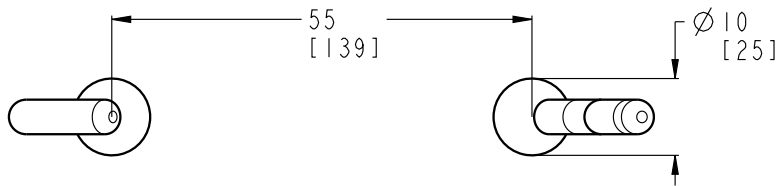
Nirbo water features are made from high quality stainless steel and engineering plastics materials, therefore they are very durable and have excellent fun factor. There are over one hundred different water features to choose from, this product is just a great example. We use brass or stainless steel nozzles which are ideal materials for the application.

Water Warm | 03102

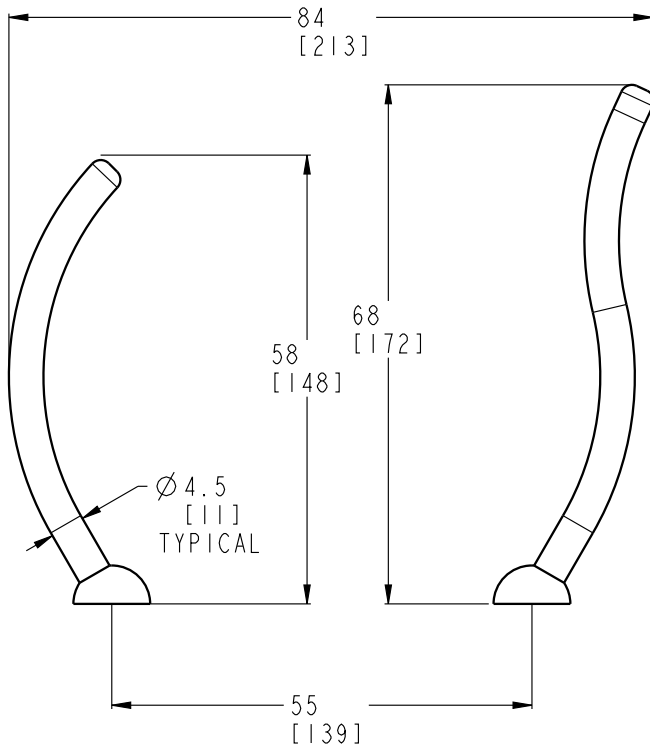
GPM	Max PSI	LPM	Max Bar
15	10	60	0.7
Width	Length	Height	
10" (25 cm)	84" (213cm)	68" (172 cm)	

Nirbo Aquatic Inc.

2400 Lucknow Drive, unit 39, Mississauga, ON L5S 1T9, Canada
Toll Free: 1.888.68.NIRBO (64726) | Tel: 1.905.766.4474 | Fax: 1.905.766.4467
Website: www.nirbo.com | Email: info@nirbo.com

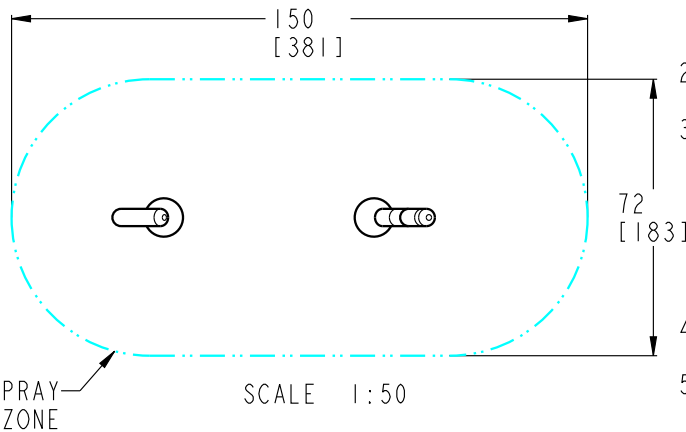


FOR EACH FOOTING DETAILS
SEE DRAWING NO: 03008-33
TYP, 2 PLACES



FLOW RATE AT 5 PSI	LOW	NORMAL	HIGH
GPM-[LPM]	12[48]	15[60]	24[96]

- 1- STRUCTURE: TYPE 304 STAINLESS STEEL
NOZZLE: BRASS WITH TAMPER RESISTANT FEATURES
- 2- FINISH: UV RESISTANT POLYESTER POWDER COATING
- 3- PRODUCT INCLUDES:
ANCHOR BOLTS WITH HARDWARE AND FOOTING TEMPLATE
SPRAY NOZZLES
WINTER NOZZLE CAPS
SERVICE TOOLS
TAMPER RESISTANT HARDWARE
- 4- BOND COMPONENT WITH #6 BARE COPPER WIRE
- 5- PRODUCT COMPLIANCE:
MEETS ADA ACCESSIBILITY GUIDELINES
MEETS CURRENT ASTM F1487 SAFETY STANDARDS



**NIRBO
AQUATIC INC.**

ALL INFORMATION CONTAINED
IN THIS DOCUMENT IS PROPERTY
OF NIRBO AQUATIC INC. AND
MAY NOT BE REPRODUCED OR
COMMUNICATED WITHOUT
PERMISSION IN WRITING FROM
NIRBO AQUATIC INC.

DATE
(yyyy.mm.dd)
2013.10.24

WATER WORM
SURFACE MOUNTED

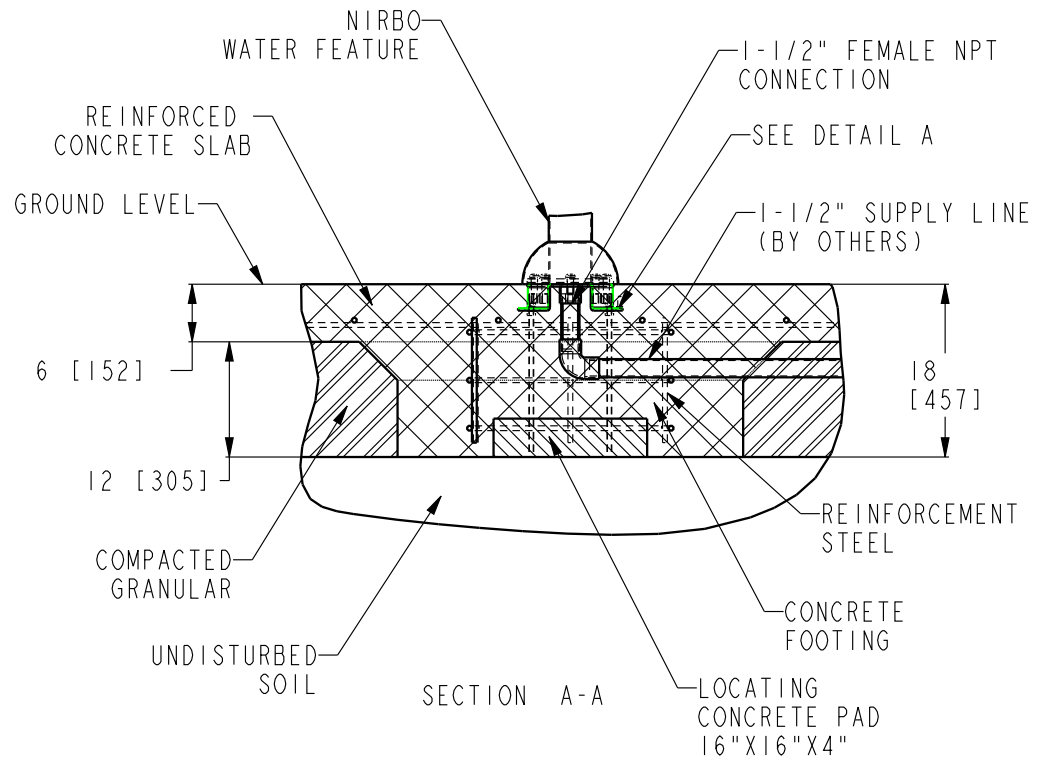
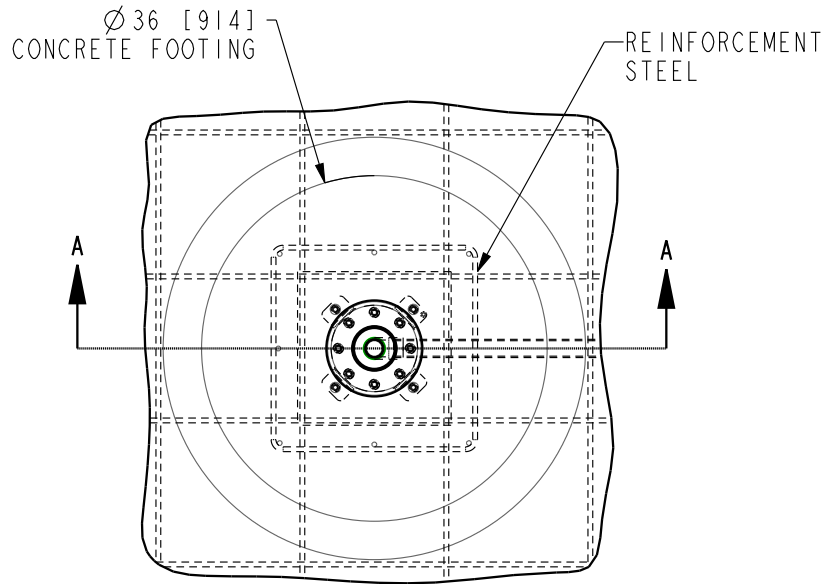
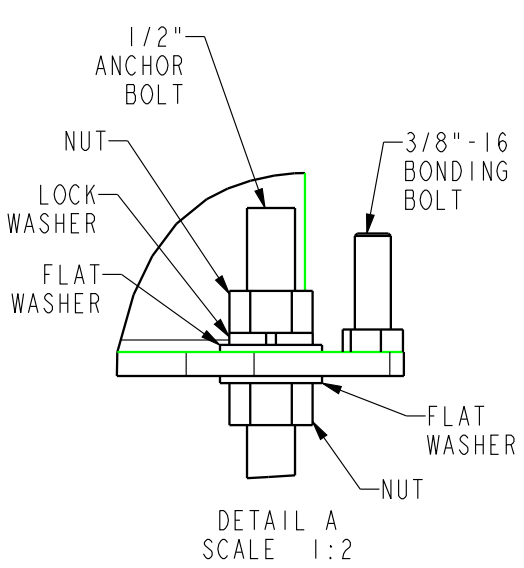
UNIT
INCH
[CM]

SHEET
1/2

DRAWING NO
03102-02-D15

REV
01

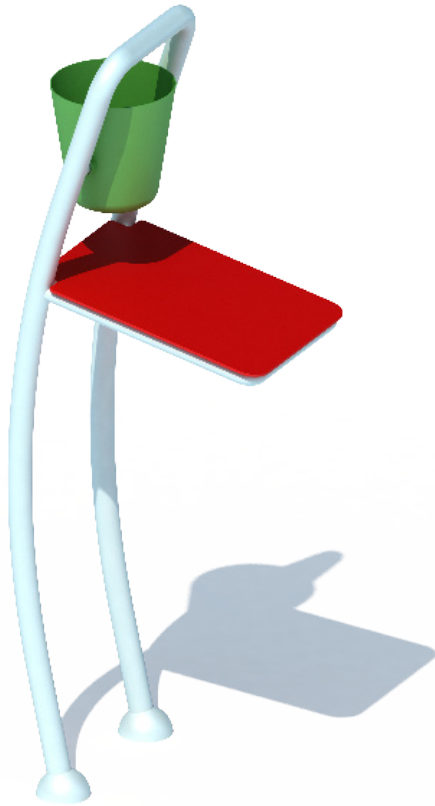
Nirbo Aquatic Inc.
Tel: 1-905-766-4474, Fax: 1-905-766-4467, Web: www.nirbo.com



NOTES:

- 1- FOLLOW LOCAL CODES, WHEREVER APPLICABLE.
- 2- GRANULAR BASE THICKNESS SHALL MEET LOCAL BUILDING CODE REQUIREMENTS.
- 3- WATER SUPPLY LINE SHALL BE INSTALLED PER LOCAL BUILDING CODES.
- 4- HARDWARE SUPPLIED BY MANUFACTURER SHALL BE USED.

NIRBO AQUATIC INC.	ALL INFORMATION CONTAINED IN THIS DOCUMENT IS PROPERTY OF NIRBO AQUATIC INC. AND MAY NOT BE REPRODUCED OR COMMUNICATED WITHOUT PERMISSION IN WRITING FROM NIRBO AQUATIC INC.	DATE (yyyy.mm.dd) 2018.10.24	SURFACE MOUNTED INSTALLATION, 3" & 4" PIPES	
		UNIT INCH [mm]	SHEET 1 / 1	DRAWING NO 03008-33



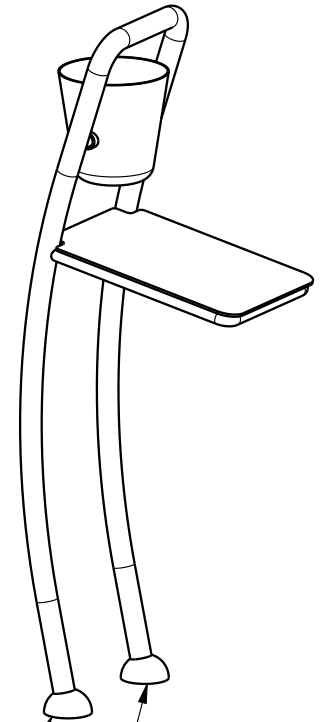
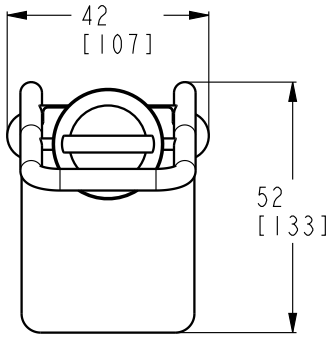
Nirbo water features are made from high quality stainless steel and engineering plastics materials, therefore they are very durable and have excellent fun factor. There are over one hundred different water features to choose from, this product is just a great example. We use brass or stainless steel nozzles which are ideal materials for the application.

Mini Bucket | 03602

GPM	Max PSI	LPM	Max Bar
15	10	60	0.7
Width	Length	Height	
42" (107 cm)	52"(133 cm)	147" (374 cm)	

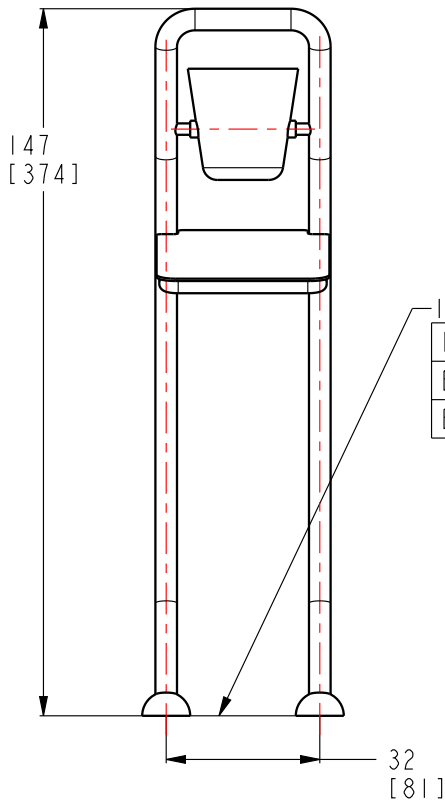
Nirbo Aquatic Inc.

2400 Lucknow Drive, unit 39, Mississauga, ON L5S 1T9, Canada
 Toll Free: 1.888.68.NIRBO (64726) | Tel: 1.905.766.4474 | Fax: 1.905.766.4467
 Website: www.nirbo.com | Email: info@nirbo.com



B

B



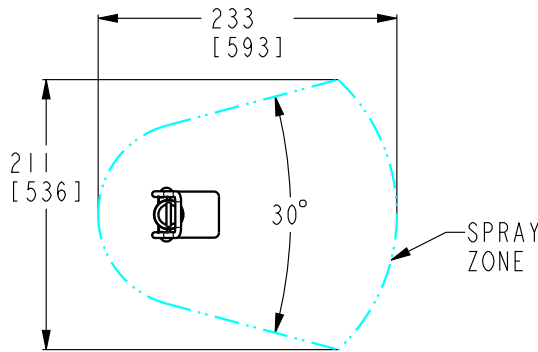
IMPORTANT:
 FINAL GRADE; SURFACE MUST
 BE FLAT 1/8" [0.3 CM]
 BETWEEN FOUR LEGS

FOR FOOTING DETAILS SEE
 DRAWING NO: 03008-33
 WATER INLET THIS LEG ONLY

USE 1/2" SS ANCHORS
 (BY NIRBO), FOR SURFACE
 MOUNT. TYP 3 LEG

A

A



SCALE 1:150

FLOW (5-10 PSI)	LOW	NOMINAL	HIGH
GPM-[LPM]	10[40]	15 [160]	20[80]

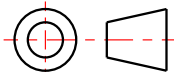
- 1- STRUCTURE: TYPE 304 STAINLESS STEEL
 NOZZLE: STAINLESS STEEL
 BEARINGS: TEFLON
 BUCKET: FRP
- 2- FINISH: UV RESISTANT POLYESTER POWDER COATING
- 3- PRODUCT INCLUDES:
 ANCHOR BOLTS WITH HARDWARE AND FOOTING
 TEMPLATE, NOZZLES, WINTER NOZZLE CAPS, SERVICE
 TOOLS & TAMPER RESISTANT HARDWARE
- 4- BOND COMPONENT WITH #6 BARE COPPER WIRE
- 5- PRODUCT COMPLIANCE:
 MEETS ADA ACCESSIBILITY GUIDELINES
 MEETS CURRENT ASTM F1487 SAFETY STANDARDS

**NIRBO
AQUATIC INC.**

ALL INFORMATION CONTAINED
 IN THIS DOCUMENT IS PROPERTY
 OF NIRBO AQUATIC INC. AND
 MAY NOT BE REPRODUCED OR
 COMMUNICATED WITHOUT
 PERMISSION IN WRITING FROM
 NIRBO AQUATIC INC.

DATE
 (yyyy.mm.dd)
 2013.11.14

MINI BUCKET
 SURFACE MOUNTED



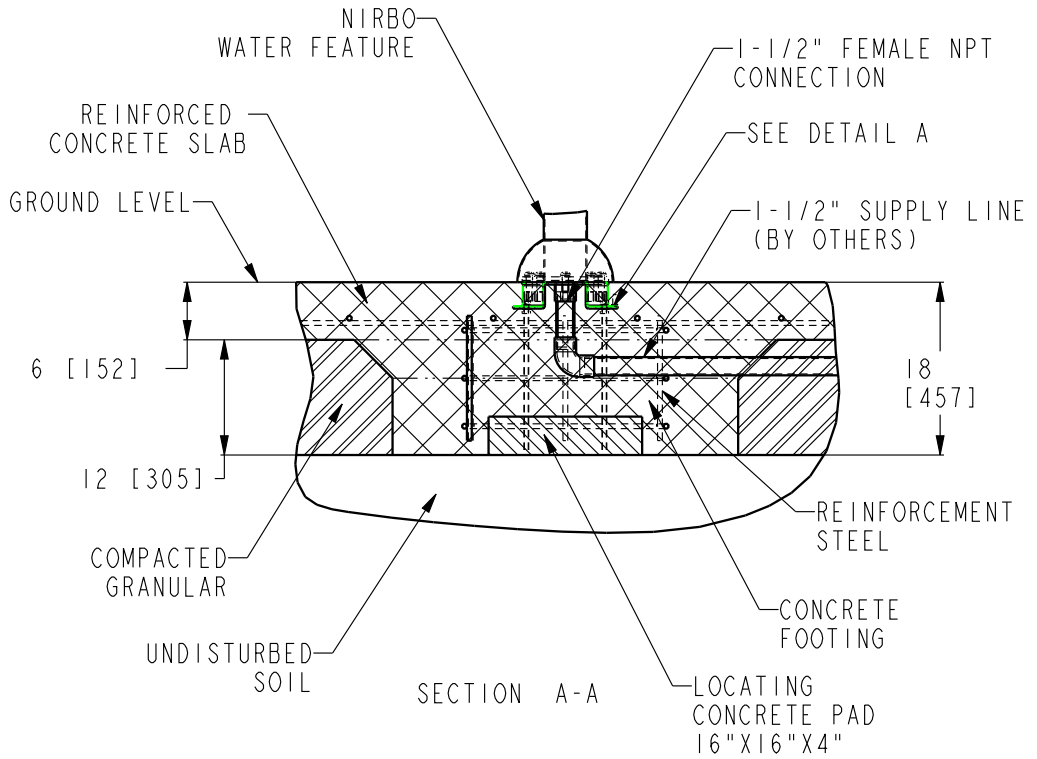
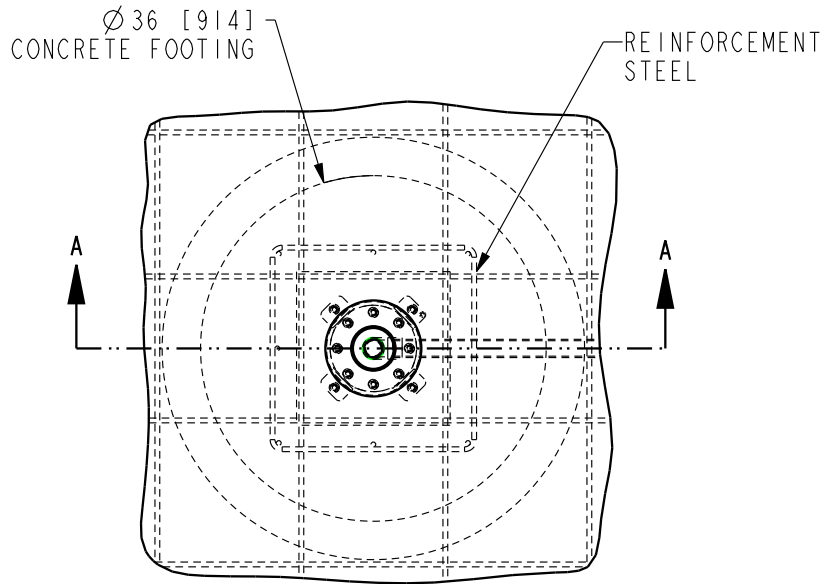
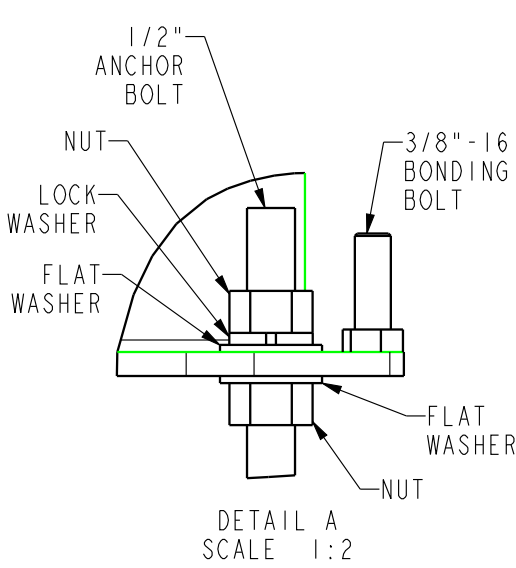
UNIT
 INCH
 [CM]

SHEET
 1/2

DRAWING NO
 03602-02-D15

REV
 01

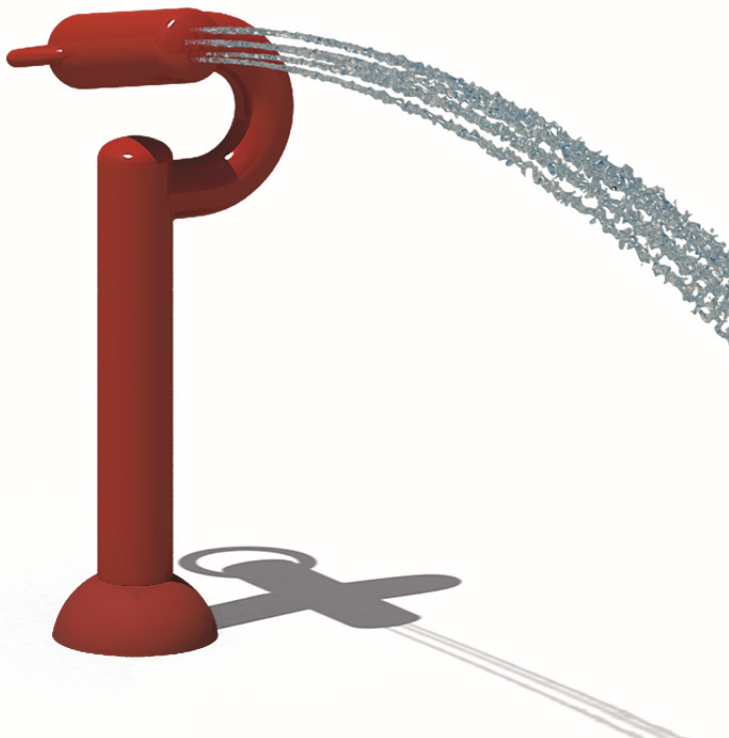
Nirbo Aquatic Inc.
Tel: 1-905-766-4474, Fax: 1-905-766-4467, Web: www.nirbo.com



NOTES:

- 1- FOLLOW LOCAL CODES, WHEREVER APPLICABLE.
- 2- GRANULAR BASE THICKNESS SHALL MEET LOCAL BUILDING CODE REQUIREMENTS.
- 3- WATER SUPPLY LINE SHALL BE INSTALLED PER LOCAL BUILDING CODES.
- 4- HARDWARE SUPPLIED BY MANUFACTURER SHALL BE USED.

NIRBO AQUATIC INC.	ALL INFORMATION CONTAINED IN THIS DOCUMENT IS PROPERTY OF NIRBO AQUATIC INC. AND MAY NOT BE REPRODUCED OR COMMUNICATED WITHOUT PERMISSION IN WRITING FROM NIRBO AQUATIC INC.	DATE (yyyy.mm.dd) 2018.10.24	SURFACE MOUNTED INSTALLATION, 3" & 4" PIPES	
		UNIT INCH [mm]	SHEET 1 / 1	DRAWING NO 03008-33
				REV 01



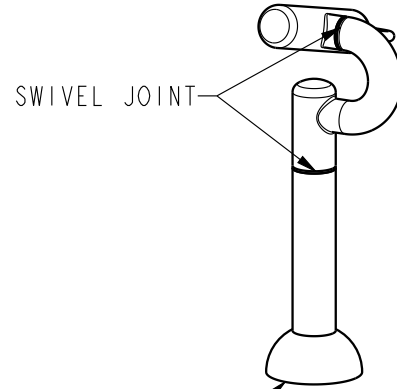
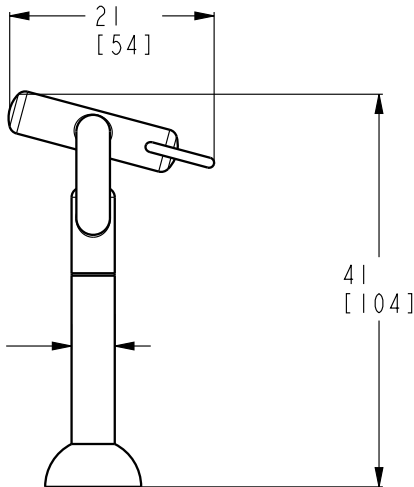
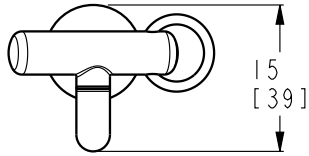
Nirbo water features are made from high quality stainless steel and engineering plastics materials, therefore they are very durable and have excellent fun factor. There are over one hundred different water features to choose from, this product is just a great example. We use brass or stainless steel nozzles which are ideal materials for the application.

Blaster Double Axis | 03260

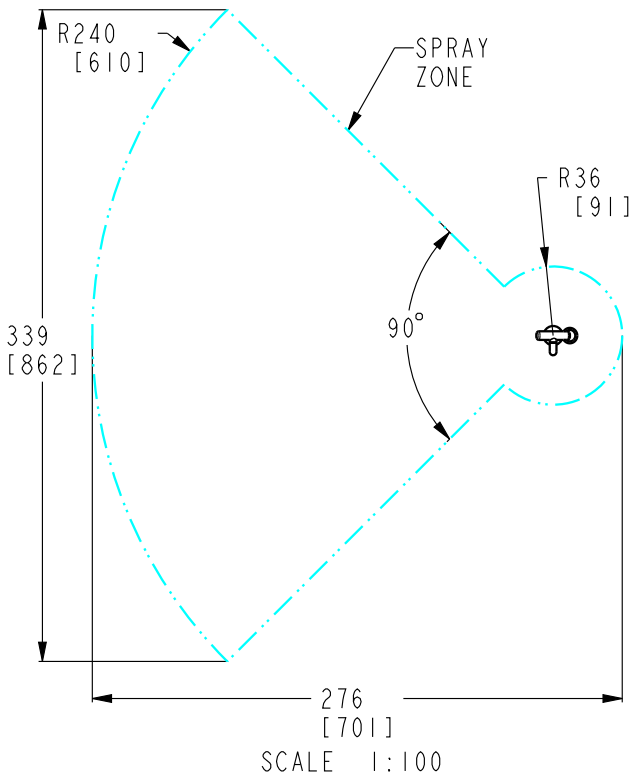
GPM	Max PSI	LPM	Max Bar
10	10	40	0.7
Width	Length	Height	
15" (39 cm)	21" (54 cm)	41" (104 cm)	

Nirbo Aquatic Inc.

2400 Lucknow Drive, unit 39, Mississauga, ON L5S 1T9, Canada
Toll Free: 1.888.68.NIRBO (64726) | Tel: 1.905.766.4474 | Fax: 1.905.766.4467
Website: www.nirbo.com | Email: info@nirbo.com



FOR FOOTING DETAILS SEE
DRAWING NO: 03008-33



FLOW (5-10 PSI)	LOW	NORMAL	HIGH
GPM-[LPM]	7[28]	10[40]	15[60]

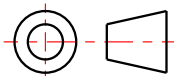
- 1- DOUBLE AXIS BLASTER, TURNS LEFT/RIGHT AND UP/DOWN.
- 2- STRUCTURE: TYPE 304 STAINLESS STEEL
NOZZLE: BRASS WITH TEMPER RESISTANT FEATURES
BEARINGS: BRONZE
- 3- FINISH: UV RESISTANT POLYESTER POWDER COATING
- 4- PRODUCT INCLUDES:
ANCHOR BOLTS WITH HARDWARE AND FOOTING TEMPLATE
SPRAY NOZZLES
WINTER NOZZLE CAPS
SERVICE TOOLS
TAMPER RESISTANT HARDWARE
- 5- GROUND COMPONENT WITH #6 BARE COPPER WIRE
- 6- PRODUCT COMPLIANCE:
MEETS ADA ACCESSIBILITY GUIDELINES
MEETS CURRENT ASTM F1487 SAFETY STANDARDS

**NIRBO
AQUATIC INC.**

ALL INFORMATION CONTAINED
IN THIS DOCUMENT IS PROPERTY
OF NIRBO AQUATIC INC. AND
MAY NOT BE REPRODUCED OR
COMMUNICATED WITHOUT
PERMISSION IN WRITING FROM
NIRBO AQUATIC INC.

DATE
(yyyy.mm.dd)
2013.10.21

BLASTER DOUBLE AXIS
SURFACE MOUNTED



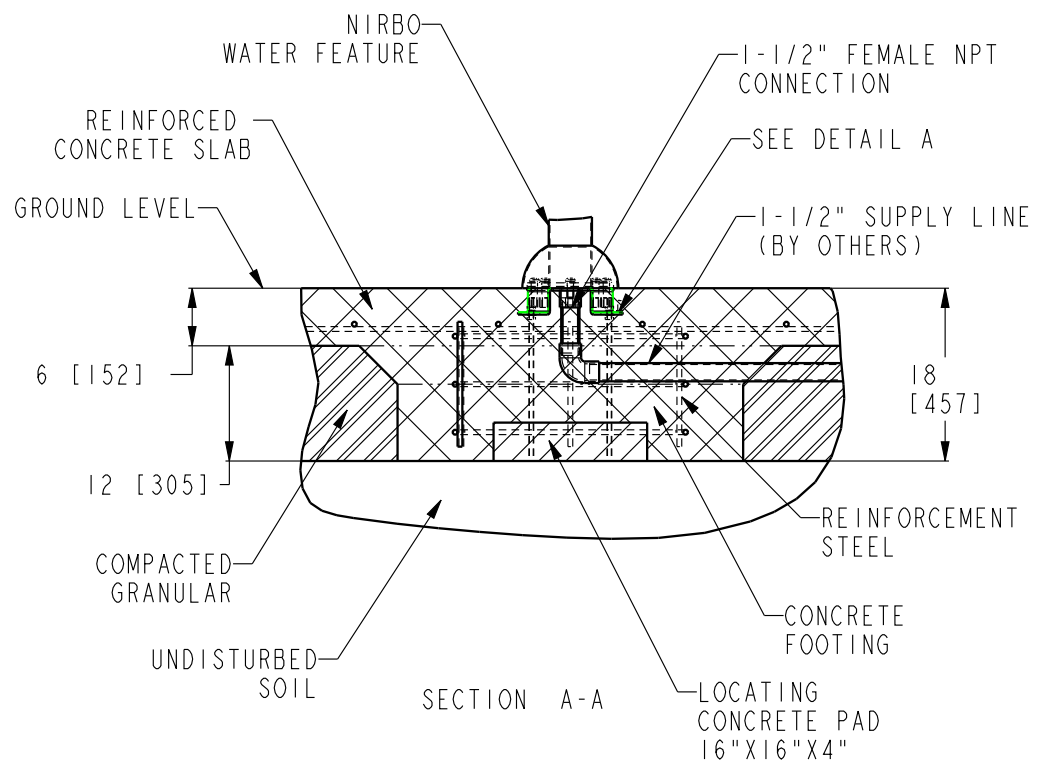
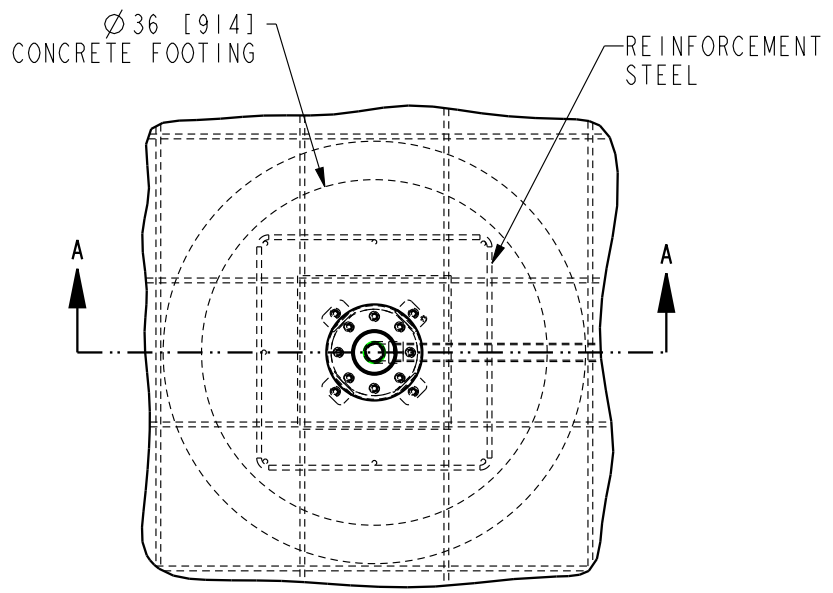
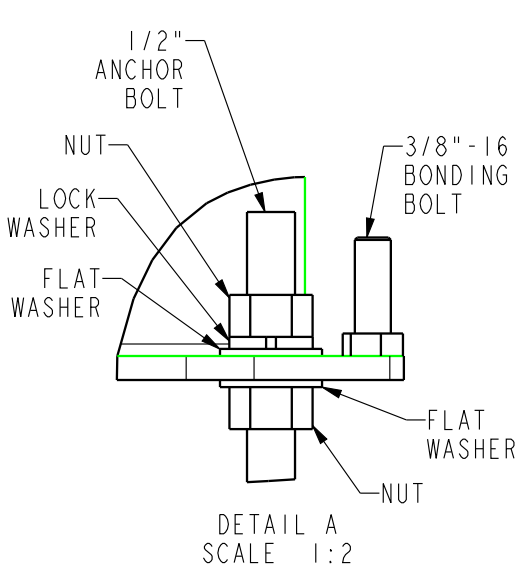
UNIT
INCH
[CM]

SHEET
1/2

DRAWING NO
03260-02-D15

REV
01

Nirbo Aquatic Inc.
 Tel: 1-905-766-4474, Fax: 1-905-766-4467, Web: www.nirbo.com



- NOTES:
- 1- FOLLOW LOCAL CODES, WHEREVER APPLICABLE.
 - 2- GRANULAR BASE THICKNESS SHALL MEET LOCAL BUILDING CODE REQUIREMENTS.
 - 3- WATER SUPPLY LINE SHALL BE INSTALLED PER LOCAL BUILDING CODES.
 - 4- HARDWARE SUPPLIED BY MANUFACTURER SHALL BE USED.

	NIRBO AQUATIC INC.	ALL INFORMATION CONTAINED IN THIS DOCUMENT IS PROPERTY OF NIRBO AQUATIC INC. AND MAY NOT BE REPRODUCED OR COMMUNICATED WITHOUT PERMISSION IN WRITING FROM NIRBO AQUATIC INC.	DATE (yyyy.mm.dd) 2018.10.24	SURFACE MOUNTED INSTALLATION, 3" & 4" PIPES		
		UNIT INCH [mm]	SHEET 1 / 1	DRAWING NO 03008-33	REV 01	



About Our Products

Construction

Tubular Structures: 304 Stainless Steel

Nozzles: Stainless Steel or Brass

Rotational Bearings: Bronze

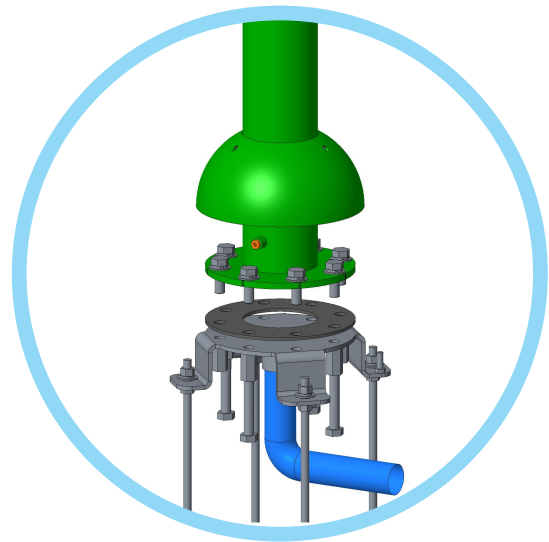
Paint: Super durable Powder Coating

Translucent Parts: UV Resistant Cast Acrylic

Top Mounting System

Depending on your requirements, all Nirbo products can be manufactured with a bolt on flange (Top Mounting System). This flange assembly allows for the flexibility of component removal, swapping and off site maintenance.

If the park closes in the winter, or you wish to re-arrange components or introduce new features later, Top Mounting System is recommended.



Nozzles

Nirbo offers nozzles with many different water effects and flow rates that are suitable for spray parks.

Our nozzles are easily configured to suit your needs. If water consumption is an issue our low flow nozzle option might be the solution. Depending on your needs, we are capable of manufacturing nozzles from several different materials. Our standard nozzle material is brass.



Nirbo Aquatic Inc.

39-2400 Lucknow Drive, Mississauga, ON L5S 1T9, Canada
Toll Free: 1.888.68.NIRBO (64726) | Tel: 1.905.766.4474 | Fax: 1.905.766.4467
Website: www.nirbo.com | Email: info@nirbo.com



About Our Products

Controllers

The Nirbo Touch Screen Controller uses a robust industrial grade PLC, touch panel, power supply, transformer and terminal blocks.

They come with following standard features:

- ON/OFF switch
- Real time clock
- Backup battery
- NEMA Type 4 steel box with powder coating
- UL and CSA approved electrical components

Controllers are constructed per National Electric Code (NEC) and have CSA or UL approval as required. A unique option of the Nirbo Touch Screen Controller is the user-friendly interface, which allows you to change park operation hours, water feature sequences and durations.



Drains

We offer two standard sizes of catch basins and grates for your spray parks. Nirbo catch basins have a sump area that collect debris and prevent clogging of the pipeline, and grates are available in a variety of colors to blend in with surrounding surfaces.

Other Features

- Smooth rounded edges
- Temper resistant hardware
- Flush mounted ground nozzles with adjustable direction control
- Toe Guard
- ADA compliant
- Highly vandal resistant Activator



Nirbo Aquatic Inc.

39-2400 Lucknow Drive, Mississauga, ON L5S 1T9, Canada
Toll Free: 1.888.68.NIRBO (64726) | Tel: 1.905.766.4474 | Fax: 1.905.766.4467
Website: www.nirbo.com | Email: info@nirbo.com



Product Warranty

Warranty period starts from the receipt of goods. Warranty excludes normal wear and tear, abuse, vandalism, or improper installation & maintenance. The warranty with respect to failure due to material or production defects on painted metal components products will either be repaired or replaced.

Duration of warranty for specific products and components are as follows;

Spray Features Stainless Steel Structures	25 Years.
Nozzles	2 Years
Plastic Parts	2 Years
Bearings	2 Years
Controller	2 Years
Motor Starter	2 Years
Paint	2 Years
Water Filtration and Recirculation System Water Tank	2 Years
All Other Products	2 Years

Limited Warranty and Coverage of Defective Parts

Warranty commences upon receipt of goods by the purchaser and is limited to parts covered by the warranty only. Warranty coverage does not apply for wear, tear, misuse or vandalism. The warranty does not cover surface corrosion in metal parts, discolored surfaces and other cosmetic failures or issues due to misuse or vandalism.

Nirbo Aquatic Inc. warrants that the parts and components comprising the Nirbo Aquatic playground sold under the attached Purchase Agreement will be free from defects in material and workmanship for the period covered in the Warranty from the date of delivery to Purchaser, or to Purchaser's customer, whichever is later, and this warranty will be limited to the repair and replacement of parts and components which Purchaser can show were defective upon delivery to Purchaser.

Modification of, or damage to, any of the parts or components the Nirbo Aquatic Inc. parts and components (as delivered to Purchaser), during final assembly (by or under the direction of Purchaser or Purchaser's customer or any third party performing such final assembly on behalf of Purchaser or Purchaser's retail customer), will void any warranty by Nirbo Aquatic Inc., whether expressed or implied. It is expressly agreed that this warranty will be in lieu of all warranties of fitness and in lieu of the warranty of merchant ability.

Proper documentation as reasonably required by Nirbo Aquatic Inc. is required to support and verify all warranty claims. Failure to provide such documentation could result in a warranty claim being denied.

Purchaser's Remedy

The sole remedy under this warranty shall be the repair, replacement or credit for defective parts as stated above. The warranty is in lieu of any other warranties either expressed or implied, including the merchantability and fitness for a particular purpose.

The foregoing warranties are exclusive and in lieu of all other warranties, including any other warranty of quality, express or implied, and including any warranty or merchantability, or any warranty of fitness for any particular purpose. There shall be no liability for incidental or consequential damages under the foregoing warranties.

Nirbo Aquatic Inc.

39-2400 Lucknow Drive, Mississauga, ON L5S 1T9, Canada
Toll Free: 1.888.68.NIRBO (64726) | Tel: 1.905.766.4474 | Fax: 1.905.766.4467
Website: www.nirbo.com | Email: info@nirbo.com

Colours

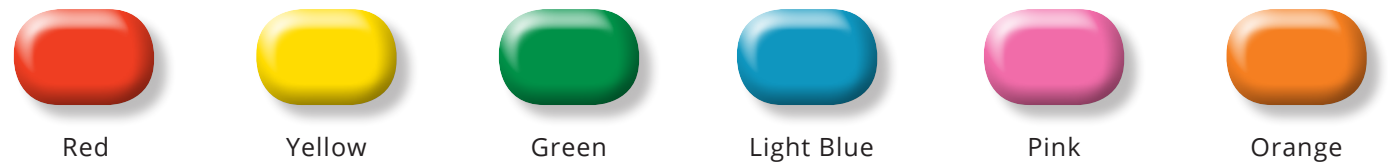


Nirbo uses oven cured, lead-free, UV resistant polyester powder coating for a durable protective finish on all metal surfaces. Our stainless products are sand blasted before they are powder coated. Most products can also be purchased with a polished stainless steel finish.

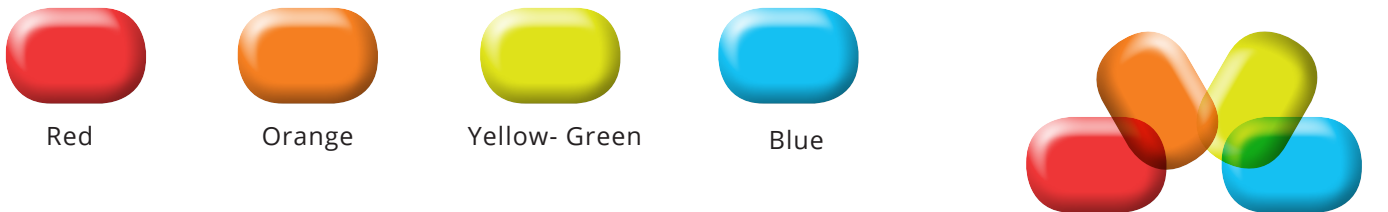
Structure Colours



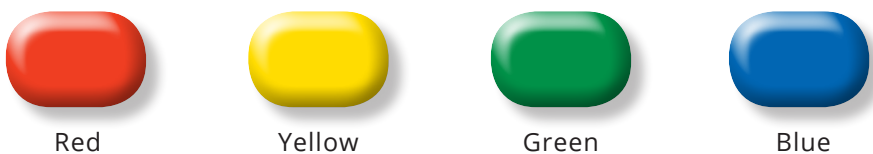
Fiberglass Colours



Fluorescent Colours



Deck and Panel Colours





References

- 1. City of Whitehouse, TX**
Contact: **Kevin Huckabee**
Phone: (903) 839-4914
Email: khuckabee@whitehousetx.org
- 2. City of Centerville, TX**
Contact: **Lindsie F. Wood**, City Secretary
Phone: (903) 536-2515
Email: centerville@valornet.com
- 3. Elk City Holiday Inn Express**
Elk City, Oklahoma
Contact: **Teresa Garcia**
Phone: 1-580-303-4556
Email: teresa.garcia@championhotels.com
- 4. Western Recreation & Development Inc.**
191 Eagle DR, Winnipeg
Manitoba R2R 1V4
Contact: **Jeff McCarron**
Phone: (204) 633-7209
E-mail: jeff@waterparks.ca
Website: www.waterparks.ca
- 5. Campark Resorts**
9387 Lundy's Lane RR#2, Niagara Falls
Ontario, Canada L2E 6S4
Contact: **Peter Van Kleef**
Phone: (905) 358-3873
Toll Free: 1-877-CAMPARK
Cell: (905) 658-3873
Fax: (905) 354-7484
E-mail: peter@campark.com
Website: www.campark.com
- 6. Highland Campground & RV Sales**
Ontario, Canada NOB 1J0
Contact: **Don Vallery**
R.R. #1 Belwood
Phone: (519) 843-2537
Cell: (519) 400-6681
Fax: (519) 843-4151
E-mail: dvallery@everus.ca
Website: www.highlandpines.com
- 7. Superior Pool Spa & Leisure Ltd.**
24 Martin Ross Avenue, Toronto
Ontario, Canada M3J 2K8
Contact: **Rick Bemister**
Phone: (416) 665-0410
Cell: (416) 999-3650
Fax: (416) 665-6877
E-mail: rickbemister@pools-world.com
Website: www.superiorpool.com
- 8. Town of Williamstown/ Township of South Glengarry**
*Scheduled and completed in spring in 2014,
with a recirculation system supplied by Nirbo,
Project budget exceeded 100,000.*
18244 Street Rd., South Glengarry, ON K6K 5R6
Contact: **Heather Grant**
Phone: (613) 931-2646
E-mail: heatherwara@hotmail.com
Website: www.southglengarry.com
- 9. Conestoga Family Camp**
*Scheduled and completed in spring in 2011,
with a recirculation system supplied by Nirbo,
Project budget exceeded 250,000.*
Moorefield Arthur RR 1, Arthur, ON N0G 1A0
Contact: **Phil Barrett**
Phone: (519) 848-3640
E-mail: pbarrett@conestogcamp.com
Website: www.conestogacamp.com
- 10. City of Cornelius, NC, Smithville Park**
*Scheduled and completed in the summer of 2016,
with a recirculation system supplied by Nirbo.
Project budget exceeded \$100,000.*
19710 S Ferry St, Cornelius, NC 28031, United States
Contact: **Kevin W Harding**
Phone: (704) 931-1081
Email: kevin@kphstrategy.com
Website: www.playworldpreferred.com

Nirbo Aquatic Inc.

39-2400 Lucknow Drive, Mississauga, ON L5S 1T9, Canada
Toll Free: 1.888.68.NIRBO (64726) | Tel: 1.905.766.4474 | Fax: 1.905.766.4467
Website: www.nirbo.com | Email: info@nirbo.com



Budget Report Account Summary

For Fiscal: 2023 Period Ending: 09/30/2023

		Original Total Budget	Current Total Budget	Period Activity	Fiscal Activity	Variance (Unfavorable)	Percent Remaining
Fund: 2204 - PARKS AND RECREATION FUND							
Revenue							
2204-4-31100	PARK & REC GEN PROPERTY TAX	63000	63000	0	333156.2	270156.2	528.82
2204-4-33501	PARK & REC FIT	600	600	0	3504.62	2904.62	584.1
2204-4-33560	PARK & REC EXCISE TAX	4500	4500	0	23879.43	19379.43	530.65
2204-4-34711	POOL RECEIPTS (Drawer 1)	120000	120000	0	112095.99	-7904.01	6.59
2204-4-34713	CONCESSION STAND (Drawer 2)	27000	27000	0	29852.82	2852.82	110.57
2204-4-36217	RENTAL FACILITIES	25000	25000	2060	25840	840	103.36
2204-4-36235	PARK & REC CVET	120	120	0	587.74	467.74	489.78
2204-4-36250	SALES TAX - RENTALS	12000	12000	891.98	8706.01	-3293.99	27.45
2204-4-39955	MISC REIMBURSEMENTS	0	0	0	58961.88	58961.88	0
	Revenue Total:	252220	252220	2951.98	596584.69	344364.69	1.365335
Expense							
2204-5-500-41330	PERF	0	0	3818.21	19427.33	-19427.33	0
2204-5-500-41331	SUPPLEMENTAL RETIREMENT	0	0	77.88	428.34	-428.34	0
2204-5-500-41350	INSURANCE - EMPLOYEE BENEFITS	0	0	4185.56	23766.64	-23766.64	0
2204-5-500-70410	OASI - MEDI/SS	0	0	2158.33	16499.27	-16499.27	0
2204-5-542-41100	SALARY/WAGES - REG	373393	373393	26844.08	136581.04	236811.96	63.42
2204-5-542-41114	SALARY/WAGES - PT/SEASONAL	57854	57854	2418.83	19903.16	37950.84	65.6
2204-5-542-41118	SALARY/WAGES - OVERTIME	16250	16250	0	0	16250	100
2204-5-542-41330	PERF	53022	53022	0	0	53022	100
2204-5-542-41331	SUPPLEMENTAL RETIREMENT	1290	1290	0	0	1290	100
2204-5-542-41350	INSURANCE - EMPLOYEE BENEFITS	74117	74117	0	0	74117	100
2204-5-542-42100	OFFICE SUPPLIES	750	750	0	166.97	583.03	77.74
2204-5-542-42310	EQUIP MAINT SUPPLIES	25000	25000	1962.55	21488.94	3511.06	14.04
2204-5-542-42913	RENTAL PROPERTY REFUNDS	1500	1500	100	2050	-550	-36.67
2204-5-542-43999	SALES TAX - RENTAL PROPERTY	10000	10000	495.8	5566.69	4433.31	44.33
2204-5-542-70410	OASI PY EXPENSES	34236	34236	0	0	34236	100
2204-5-544-41114	SALARY/WAGES - SEASONAL	80000	80000	0	64310.3	15689.7	19.61
2204-5-544-42200	SUPPLIES	30000	30000	0	36365.06	-6365.06	-21.22
2204-5-544-42214	CONCESSION SUPPLIES	20000	20000	0	24725.12	-4725.12	-23.63
2204-5-544-42310	SALES & FOOD/BEV TAX	3000	3000	342.45	2559.12	440.88	14.7
2204-5-544-70410	OASI PY EXPENSES	6120	6120	0	0	6120	100
	Expense Total:	786532	786532	42403.69	373837.98	412694.02	0.524701
	Fund: 2204 - PARKS AND RECREATION FUND Surplus (Deficit):	-534312	-534312	-39451.71	222746.71	757058.71	1.416885
Fund: 4403 - PARK NON-REVERTING FUND							
Revenue							
4403-4-34714	FITNESS CENTER - INCOME	225000	225000	17159	165519.5	-59480.5	26.44
4403-4-34715	RECREATION PROGRAM INCOME	45000	45000	3664	27051.55	-17948.45	39.89
4403-4-34718	WINTERLAND REVENUE	45000	45000	0	0	-45000	100
4403-4-34720	PARK IMPACT FEES	70000	70000	32393	347387	277387	496.27
4403-4-39915	BLANTON HOUSE RENTAL INCOME	60000	60000	8837.5	43287.5	-16712.5	27.85
4403-4-39953	MISC INCOME	0	0	0	2614	2614	0
	Revenue Total:	445000	445000	62053.5	585859.55	140859.55	0.316538
Expense							
4403-5-500-41100	SALARY/WAGES	65157	65157	6508.57	65538.09	-381.09	-0.58
4403-5-500-41114	SALARIES/WAGES - PART TIME	67860	67860	0	0	67860	100
4403-5-500-41330	PERF	9253	9253	625.56	6404.68	2848.32	30.78
4403-5-500-41350	INSURANCE - EMPLOYEE HEALTH	14690	14690	958.46	10984.6	3705.4	25.22
4403-5-500-42225	FITNESS CENTER - EXPENSES	75000	75000	3134.97	51476.61	23523.39	31.36
4403-5-500-42230	RECREATION PROGRAM EXP	20000	20000	772.77	15667.1	4332.9	21.66

Budget Report

For Fiscal: 2023 Period Ending: 09/30/2023

		Original	Current	Period	Fiscal	Variance	
		Total Budget	Total Budget	Activity	Activity	Favorable	Percent
						(Unfavorable)	Remaining
4403-5-500-42235	PARK EXPENSE	50000	50000	686.44	39914.91	10085.09	20.17
4403-5-500-43151	TRAINING	7500	7500	2375	4421	3079	41.05
4403-5-500-43402	PARK IMPACT FEE EXPENSE	200000	200000	0	0	200000	100
4403-5-500-43650	BLANTON HOUSE EXPENDITURES	25000	25000	1385.63	26586.09	-1586.09	-6.34
4403-5-500-70410	OASI - MED/SS	10177	10177	470.24	4765.61	5411.39	53.17
4403-5-500-73240	WINTERLAND	45000	45000	0	6962.34	38037.66	84.53
	Expense Total:	589637	589637	16917.64	232721.03	356915.97	0.605315
	Fund: 4403 - PARK NON-REVERTING FUND Surplus (Deficit):	-144637	-144637	45135.86	353138.52	497775.52	3.44155
Fund: 4439 - FOOD & BEVERAGE TAX							
Revenue							
4439-4-33519	FOOD & BEVERAGE TAX	200000	200000	25694.49	191191.89	-8808.11	4.4
	Revenue Total:	200000	200000	25694.49	191191.89	-8808.11	0.044041
Expense							
4439-5-500-43106	OTHER SERVICES & CHARGES	225000	225000	0	0	225000	100
4439-5-500-43200	CAPITAL OUTLAY	0	0	0	4200	-4200	0
	Expense Total:	225000	225000	0	4200	220800	0.981333
	Fund: 4439 - FOOD & BEVERAGE TAX Surplus (Deficit):	-25000	-25000	25694.49	186991.89	211991.89	8.479676
	Report Surplus (Deficit):	-703949	-703949	31378.64	762877.12	1466826.12	2.083711

Group Summary

Account Type	Original Total Budget	Current Total Budget	Period Activity	Fiscal Activity	Variance	
					Favorable (Unfavorable)	Percent Remaining
Fund: 2204 - PARKS AND RECREATION FUND						
Revenue	252220	252220	2951.98	596584.69	344364.69	1.365335
Expense	786532	786532	42403.69	373837.98	412694.02	0.524701
Fund: 2204 - PARKS AND RECREATION FUND Surplus (Deficit):	-534312	-534312	-39451.71	222746.71	757058.71	1.416885
Fund: 4403 - PARK NON-REVERTING FUND						
Revenue	445000	445000	62053.5	585859.55	140859.55	0.316538
Expense	589637	589637	16917.64	232721.03	356915.97	0.605315
Fund: 4403 - PARK NON-REVERTING FUND Surplus (Deficit):	-144637	-144637	45135.86	353138.52	497775.52	3.44155
Fund: 4439 - FOOD & BEVERAGE TAX						
Revenue	200000	200000	25694.49	191191.89	-8808.11	0.044041
Expense	225000	225000	0	4200	220800	0.981333
Fund: 4439 - FOOD & BEVERAGE TAX Surplus (Deficit):	-25000	-25000	25694.49	186991.89	211991.89	8.479676
Report Surplus (Deficit):	-703949	-703949	31378.64	762877.12	1466826.12	2.083711

Fund Summary

Fund	Original	Current	Period	Fiscal	Variance
	Total Budget	Total Budget	Activity	Activity	Favorable (Unfavorable)
2204 - PARKS AND RECREATION f	-534312	-534312	-39451.71	222746.71	757058.71
4403 - PARK NON-REVERTING FU	-144637	-144637	45135.86	353138.52	497775.52
4439 - FOOD & BEVERAGE TAX	-25000	-25000	25694.49	186991.89	211991.89
Report Surplus (Deficit):	-703949	-703949	31378.64	762877.12	1466826.12